

Del Sig Lertis



ai non intesi per altro

sguardo quel dolce smile che

6.

I. alma impiaga      quel dolce inno che,

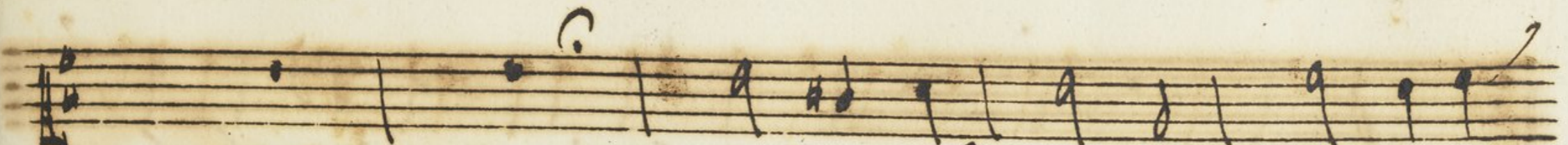
I - alma impia - -

Handwritten musical notation on two staves. The top staff has a treble clef and a key signature of one sharp (F#). The bottom staff has a bass clef and a key signature of one sharp (F#). The music consists of several measures with various note values and rests. The word "ga" is written above the final notes of the second staff.

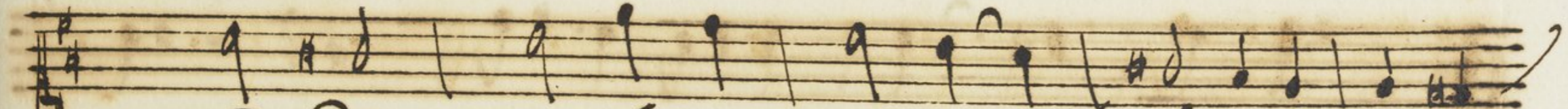
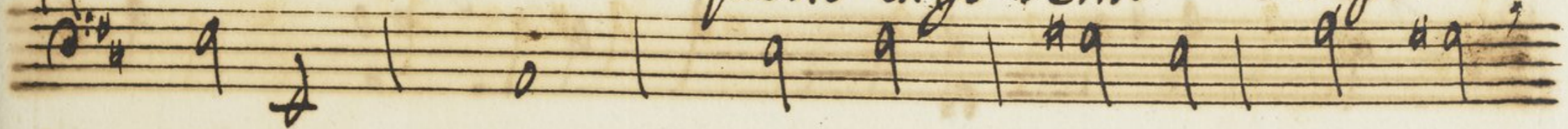
Handwritten musical notation on two staves. The top staff has a treble clef and a key signature of one sharp (F#). The bottom staff has a bass clef and a key signature of one sharp (F#). The music consists of several measures with various note values and rests. The lyrics "che l'alme" and "impia" are written below the notes.

Handwritten musical notation on two staves. The top staff features a treble clef and a key signature of one sharp (F#). The melody consists of quarter and eighth notes, with a prominent dotted quarter note on the second staff line. The bottom staff features a bass clef and a key signature of one sharp (F#). The accompaniment consists of quarter notes, with some notes marked with a sharp sign (#). There are horizontal dashes above the staff, possibly indicating rests or phrasing.

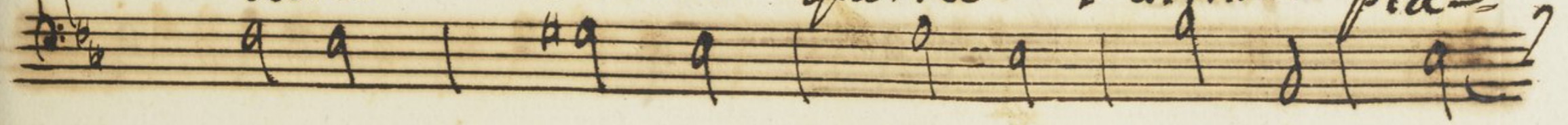
Handwritten musical notation on two staves. The top staff features a treble clef and a key signature of one sharp (F#). The melody consists of quarter and eighth notes, with a dotted quarter note on the second staff line. The bottom staff features a bass clef and a key signature of one sharp (F#). The accompaniment consists of quarter notes, with some notes marked with a sharp sign (#). There are horizontal dashes above the staff, possibly indicating rests or phrasing.



questo ch'io sento è il primo



dardo e sarà questa l'ultima pia-



ga e sarà questa l-ul-

tima pia

Handwritten musical score on three staves. The top staff contains a melodic line with notes and rests. The middle staff contains a bass line with notes and rests, and the word "ga" written below it. The bottom staff contains a bass line with notes and rests, and the lyrics "mai non in tesi per altro sguardo" written below it. The music is written in a historical style with a treble clef and a key signature of one sharp (F#).

ga

mai non in tesi per altro sguardo

Handwritten musical notation for the first system. The top staff is a vocal line with a treble clef and a key signature of one sharp (F#). The bottom staff is a basso continuo line with a bass clef and a key signature of one sharp. The lyrics are written between the staves: "quel dolce strale che l'alme impiaga". The word "l'alme" has a small "b." above it. The music consists of quarter notes and rests.

Handwritten musical notation for the second system, continuing the vocal and basso continuo lines. The lyrics are "quel dolce strale che l'alme im-". The notation includes quarter notes and rests on both staves.

piaga

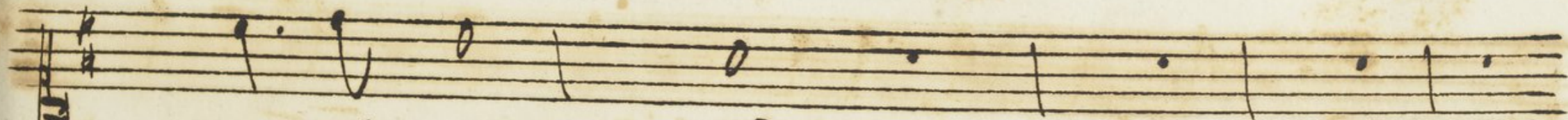


Handwritten musical score on three systems of staves. The top system features a vocal line with lyrics "ria" and a piano accompaniment. The middle system features a vocal line with lyrics "ga" and a piano accompaniment. The bottom system features a piano accompaniment. The paper is aged and stained.

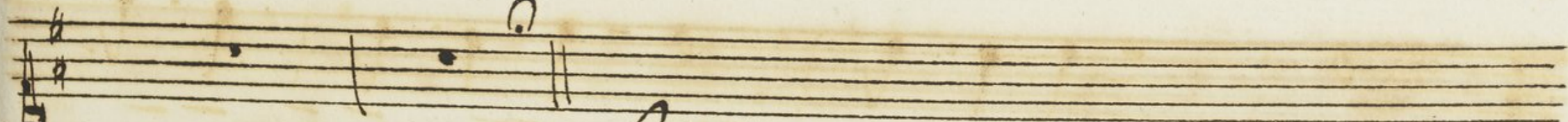
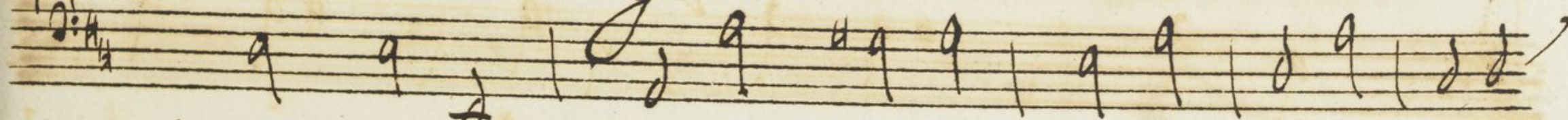
Handwritten musical notation for the first system. The top staff is a vocal line in G major (one sharp) and 3/4 time, starting with a treble clef and a common time signature. The bottom staff is a piano accompaniment line in G major and 3/4 time, starting with a bass clef and a common time signature. The lyrics "che l'anime impia" are written between the staves. The music consists of quarter and eighth notes with various accidentals.

che l'anime impia-

Handwritten musical notation for the second system, continuing the vocal and piano parts from the first system. The notation is consistent with the first system, showing the continuation of the melody and accompaniment.



ga



line

