



Del Sig. Cesti

h che narrommi il  
uér quel dolce mio pen-

*- sier che alor così mi disse tu vai cer-*

*- cando Ulisse tu vai cercando Ulisse ev-*



.. tesse e' feco ah che narrommi il uer



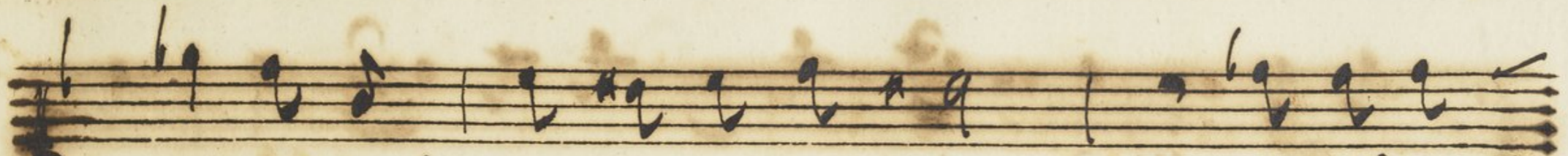
tu vai cercando V tesse tu vai cercando V-



Handwritten musical score on aged paper, featuring two systems of staves. The first system consists of a vocal line (treble clef) and a piano accompaniment line (soprano clef). The second system also consists of a vocal line (treble clef) and a piano accompaniment line (soprano clef). The lyrics are written in Italian.

*... terra e Ulisse è feo*

*al suo bel uolov innante si mosse il core a-*



...manente ma oppresso dal dolor      o not co.



...nozze all'hor      o per fu ce - - co      o not co =



Handwritten musical notation for the first system. The top staff is a vocal line with a treble clef and a common time signature. The bottom staff is a basso continuo line with a bass clef and a common time signature. The lyrics are written in a cursive hand between the staves.

*- notte all-Eor o' pur fu' cicio ah-*

Handwritten musical notation for the second system. The top staff is a vocal line with a treble clef and a common time signature. The bottom staff is a basso continuo line with a bass clef and a common time signature. The lyrics are written in a cursive hand between the staves.

*chi narrommi il ver quell dolce mio pen-*

Handwritten musical notation for the first system. The top staff is a vocal line with a treble clef and a key signature of one flat (B-flat). The bottom staff is a bass line with a bass clef. The lyrics are written between the staves.

rier ch' al cor mosi' mi disse tu vai cercando V=

Handwritten musical notation for the second system. The top staff is a vocal line with a treble clef and a key signature of one flat (B-flat). The bottom staff is a bass line with a bass clef. The lyrics are written between the staves.

lisse tu vai cercando V lisse e lisse e fe-

Handwritten musical score for the first system. The vocal line (top staff) begins with a fermata over a whole note, followed by a melodic phrase. The basso continuo line (bottom staff) provides harmonic support. The lyrics are written in a cursive hand below the vocal staff.

10 ah che narrommi il uer ti uai cercando V-

Handwritten musical score for the second system. The vocal line continues with a melodic phrase, ending with a fermata. The basso continuo line continues with a rhythmic pattern. The lyrics are written in a cursive hand below the vocal staff.

lesse ti uai cercando Vnisse e Vnisse e tuo fine