

13 Aria: allegro

Saml. Engelhart

N:r 557

del vivaldi

Violino

Viola

Soprano

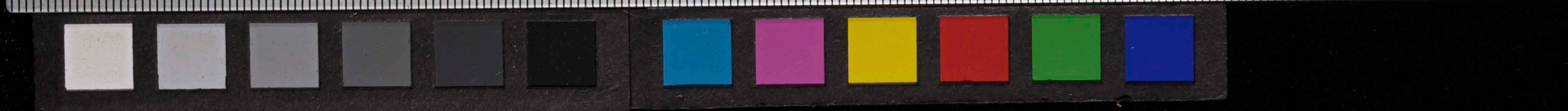
Tamburo

cordaparte.

Ruscel letto che è lungi dal ma =

cordaparte.

re che è lungi dal mare con passi d'argento sen valento





lento sen valento lento lam = = = = do la spon da.

forte. piano

Ruscelletto che e lungi dal mare con

conclapante

passi d'argento sen uà ten to lento sen uà len to lento lam

conclapante.

ben = = = = do la spon da lam ben =



*forte.*

*ola spon-da*

*Concupisce.*

*ma le giunge ai cino à ba ciare la rena di*

*Concupisce*

*letta nel corso saffretta nel corso saffretta pre cipita ipre*



*Con la parte.*

Handwritten musical score for the first system. It consists of three staves. The top staff is a vocal line in treble clef with a key signature of one flat and a common time signature. The middle staff is a vocal line in bass clef. The bottom staff is a piano accompaniment in bass clef, featuring dense chordal textures. The lyrics are: *cipita l'on - da nel corso sat -*

Handwritten musical score for the second system. It consists of three staves. The top staff is a vocal line in treble clef. The middle staff is a vocal line in bass clef with the lyrics: *retta nel corso sat, retta precipita l'on da ve*. The bottom staff is a piano accompaniment in bass clef. The system concludes with a double bar line.

*Facapo.*

Handwritten musical score for the third system. It consists of three staves. The top staff is a vocal line in treble clef. The middle staff is a vocal line in bass clef with the lyrics: *cipita l'on - da.* The bottom staff is a piano accompaniment in bass clef. The word *Facapo.* is written in large, stylized script across the right side of the system. The system concludes with a double bar line.



No: 13. Aria Allegro Dell'vivacini

*piana*

*forte*

*Pian.*

Haydn



