

*molto* *i lumi chrye. as* *Fine*

*22* *Sinfonia Auanti* *Grave*

Handwritten musical score on three staves. The first staff begins with a treble clef and a key signature of one flat. The notation includes quarter notes, half notes, and a complex sixteenth-note passage. The word *presto* is written above the first staff. The second staff continues the melodic line with similar note values and a sixteenth-note passage. The third staff features a bass clef and a time signature of 4/3, with a *presto* marking below it. The page is numbered 81 in the top right corner and 43 in the middle left.

Handwritten musical score on three staves. The notation consists of eighth and sixteenth notes, often beamed together in groups. The first staff starts with a treble clef and a key signature of one flat. The second and third staves continue the melodic and harmonic development. The page is numbered 82 in the top right corner.

Handwritten musical score for the first system, consisting of three staves. The top two staves are in treble clef, and the bottom staff is in bass clef. The music features complex rhythmic patterns and dense chordal textures.

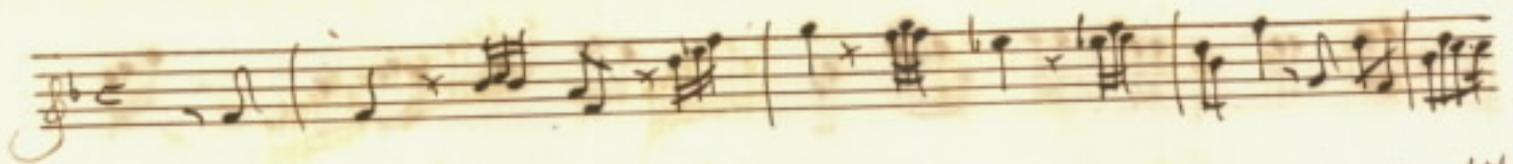
A set of five empty musical staves.

Handwritten musical score for the second system, first staff. It begins with a treble clef and a "Cory" marking. The notation includes various note values and rests.

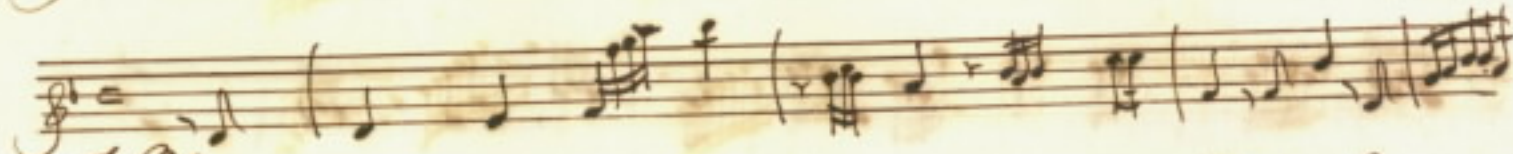
Handwritten musical score for the second system, second staff. It begins with a treble clef and a "9" marking. The notation includes various note values and rests.

Handwritten musical score for the second system, third staff. It begins with a treble clef and a "Cory" marking. The notation includes various note values and rests, ending with the word "Finis".

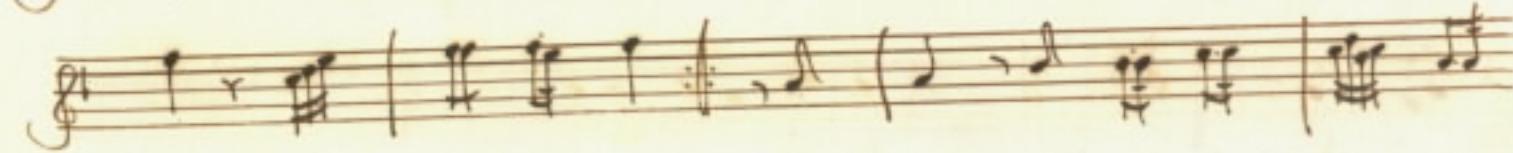
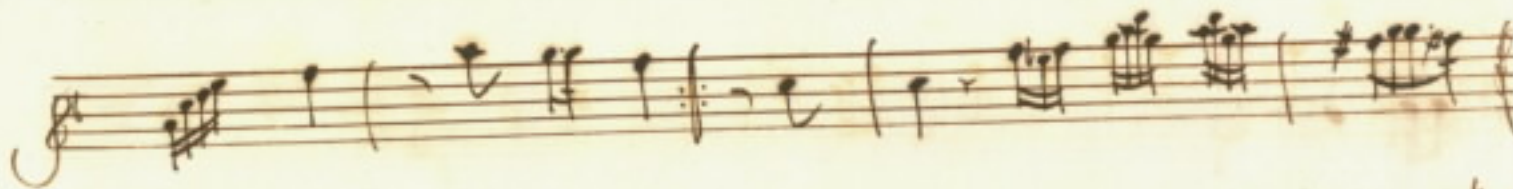
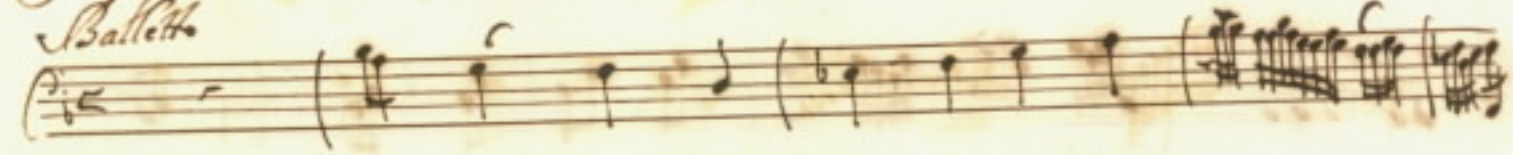
A set of five empty musical staves.

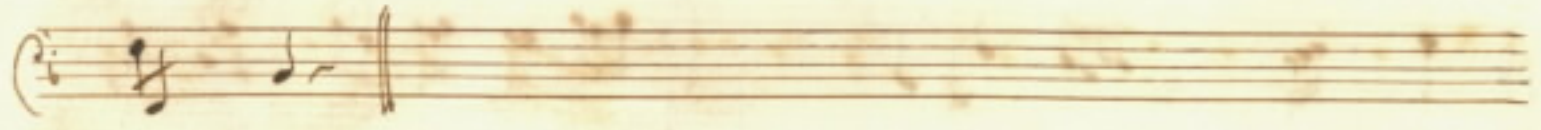
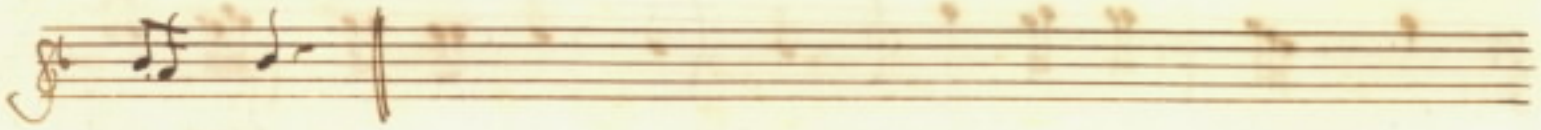
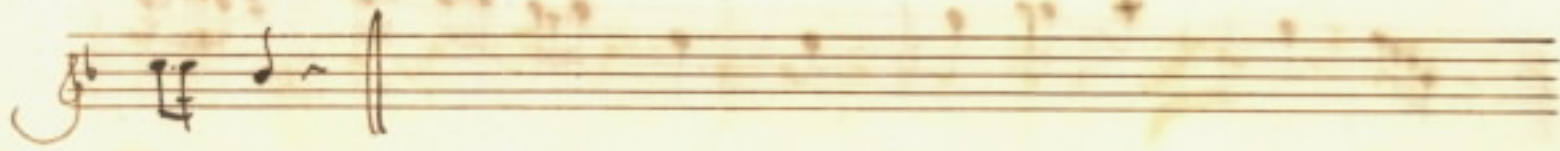
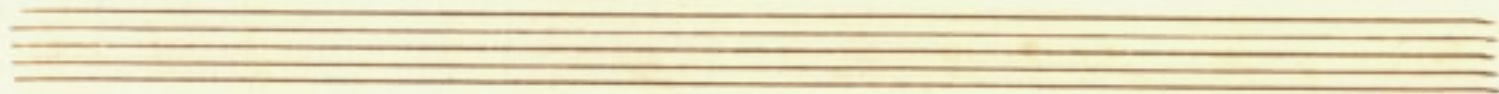
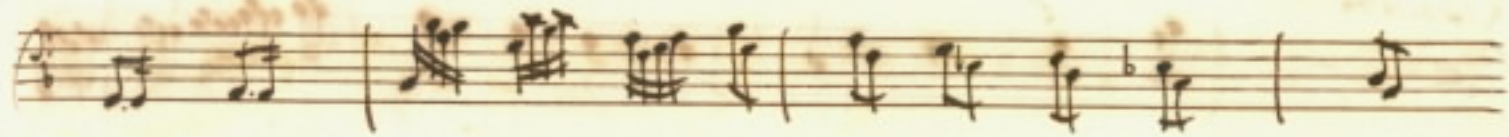
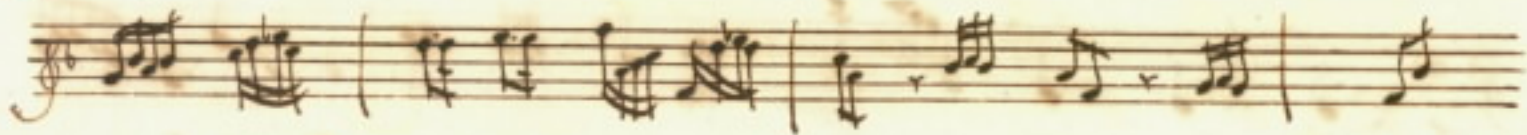
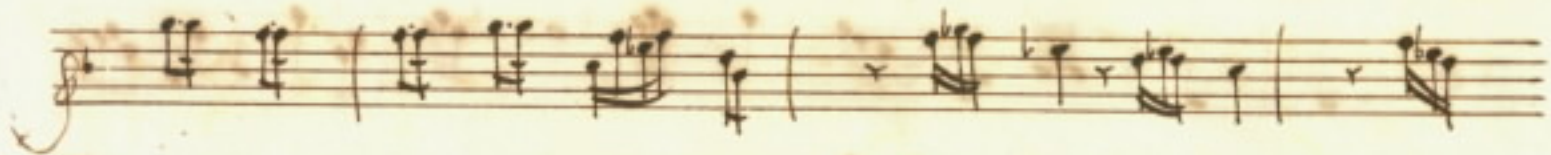


52  
83



*Balletto*





Serenata à solo

Corre = = = = a  
Pi o o

nel seno amato Ver l'Occidente

fretto = lo = = so il Me e con fiamme brillanti  
Pi o o

il suo carro nel lato già riulge = = = va al Mare il

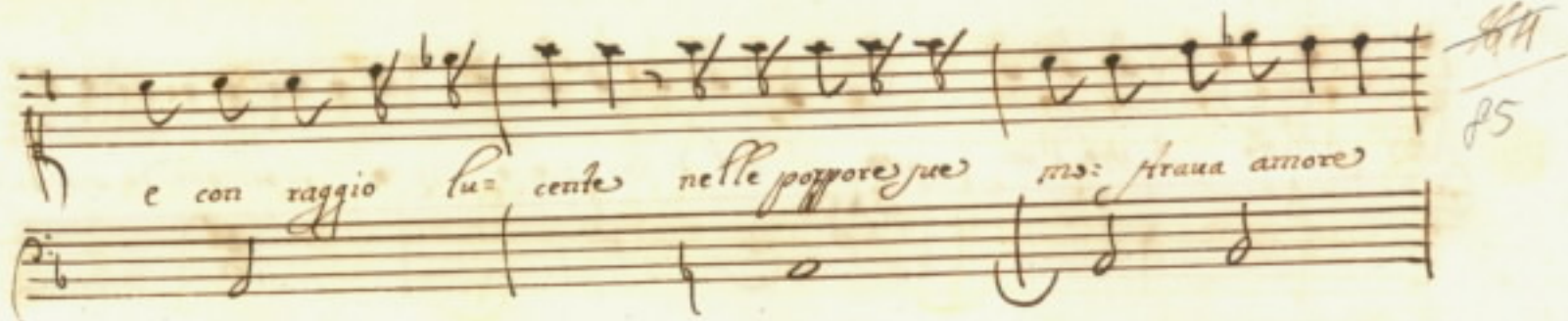
*pigro Ar: lux* e la notte se: rena l'ombre fugando à

*fiac = = =* cole di Aelle mostrauai à mortal fia le piu belo

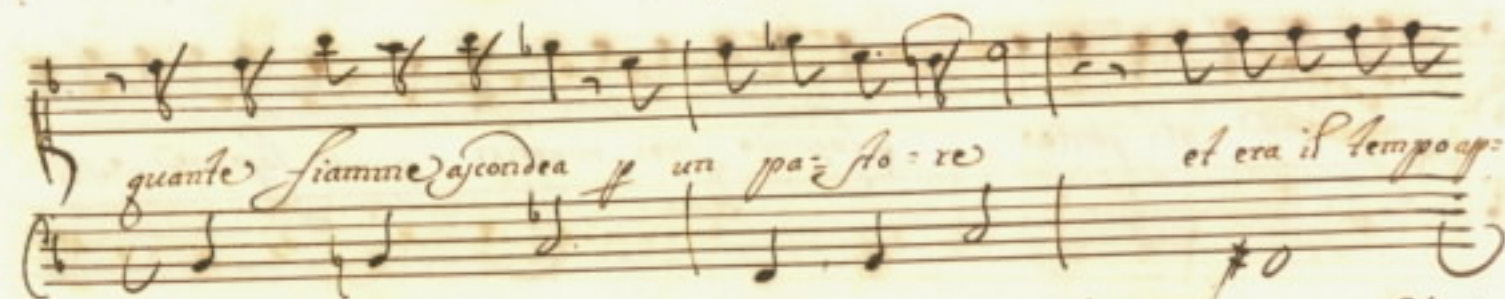
*roseggiante nel*

*Chijs* sorgea tutta ridente dal letto Pastoral la bella dea

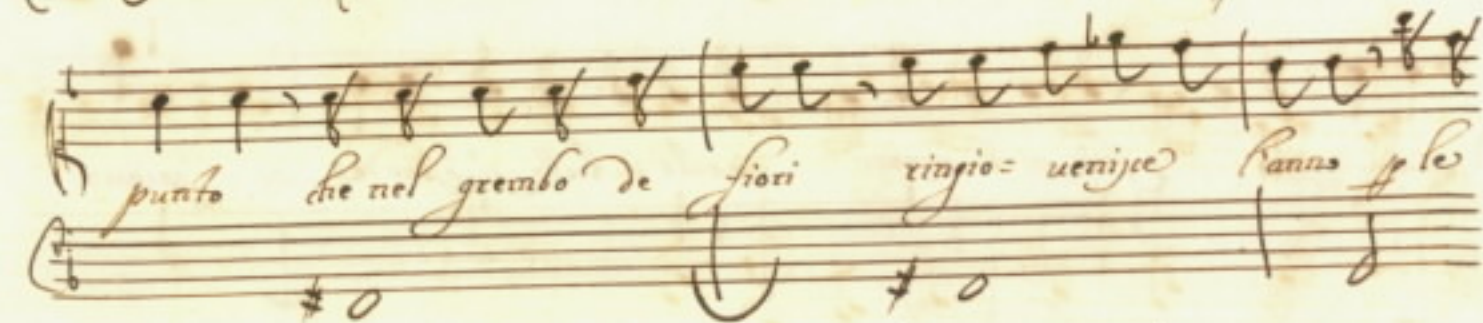
*84*  
*85*



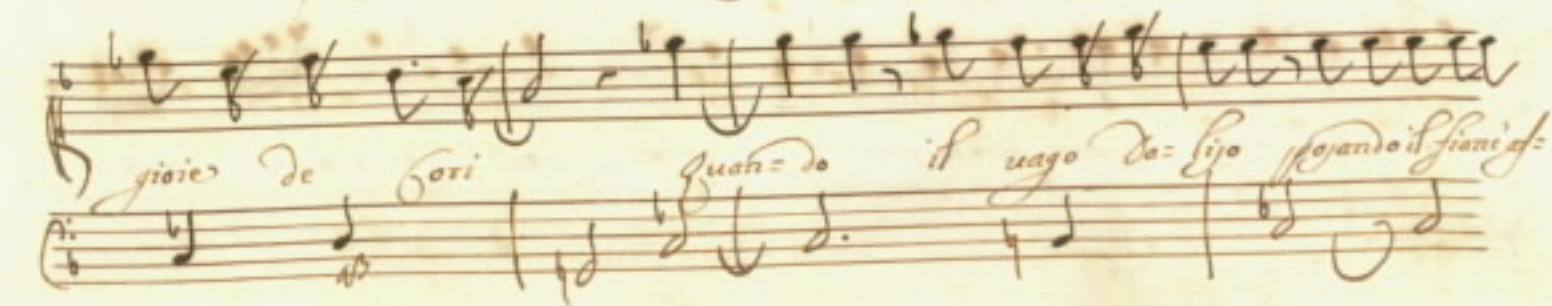
e con raggio lucente nelle poppore sue ins: fraua amore



quante fiamme ardeua per un pa: so: re et era il tempo ap:



punto che nel grembo de fiori ringio: uenire l'anno ple



gioie de fiori Quan: do il uago da: l'ijo spando il fiani: of:



*Stillo* a piè d'un *scoglio* dal di cui mezzo *uscì* mormorando *scorrea*

*fontana* al: gente *soffrendo* i suoi martiri *in* lagrime, e so=

*spira* *llo* *fra* molti *orrori* *mentr'* a tutti *si* *asconde* *pian=*

*fac* *soffi=* *ri* *pian=* *ti,* *e* *soffi=* *ri* *con* *son=* *dea* *con* *l'on=* = =

ff  
86

De e P. humilote

quancie di perle lagri = mojes che dal cor distil = laua il suo do =

lores ter = gea tutta pietas ter = gea tutta spietas spie =

ta = = = = = Anno = = = = = anche al fin le sue

membra dal lungo raggi = rari in seno all' orbe martire

ando i lumi al cielo coji con l'au = re, el vento foga = ua si = gnorando il suo tormen

to coji con l'au = re, el ven = to foga = ua si = gnorane

to coji con l'au = re, el ven = to foga = ua si = gnorane

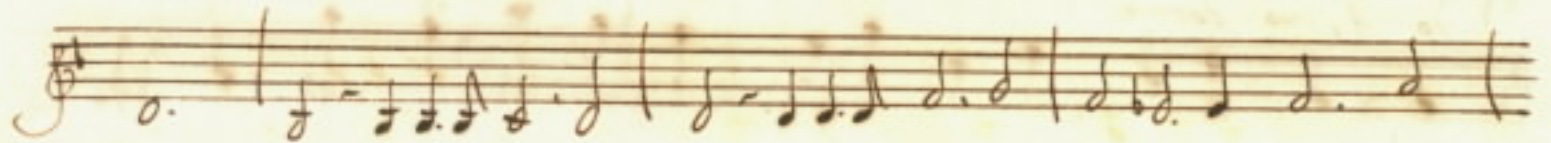
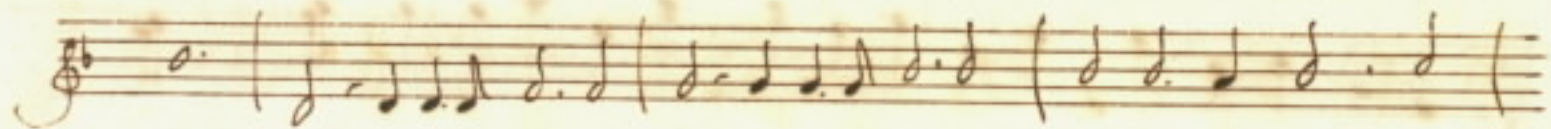
*26*  
F7

No il suo formen =

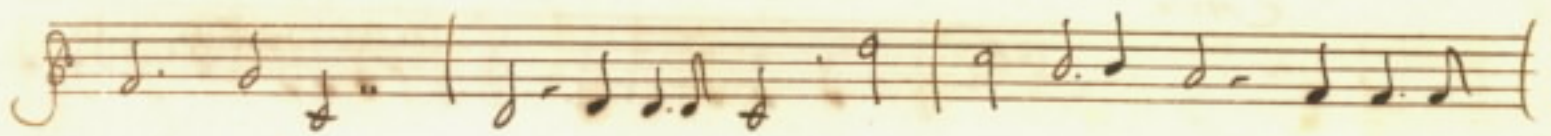
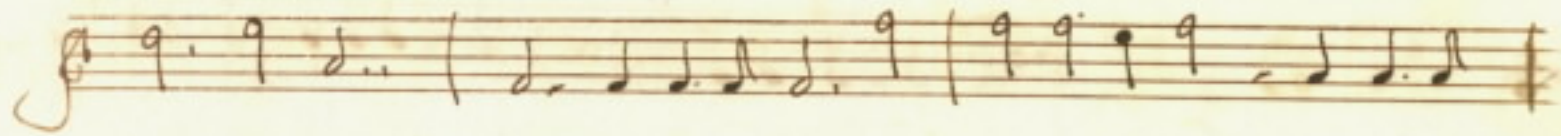
*Sigue*

*Aria*

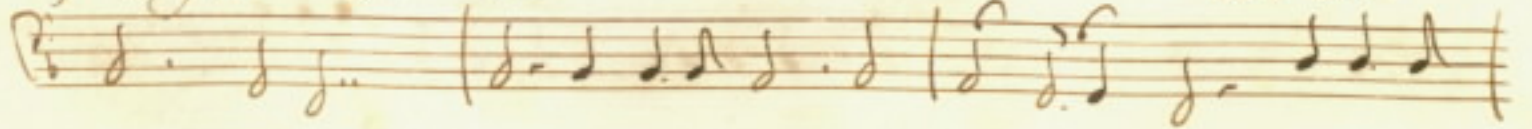
*Largo*

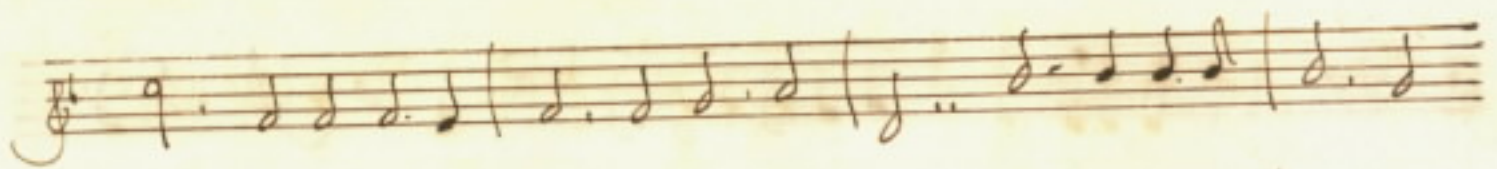


*ombre opaque*      *ch'il chiarore*      *del la luce*

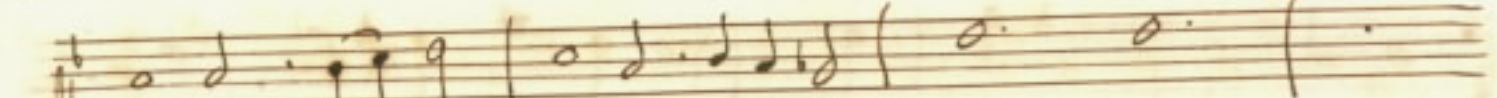
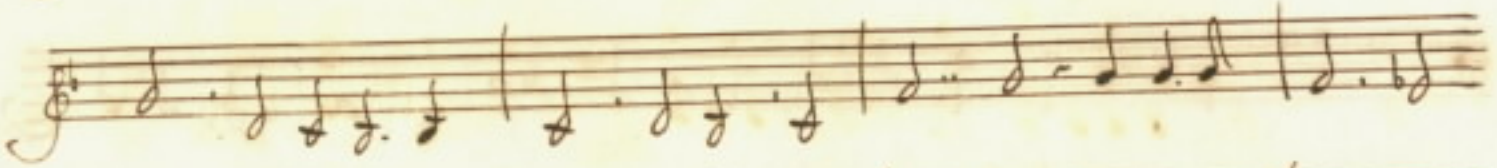


*m'aycon = de = te*      *ch'il chia =*

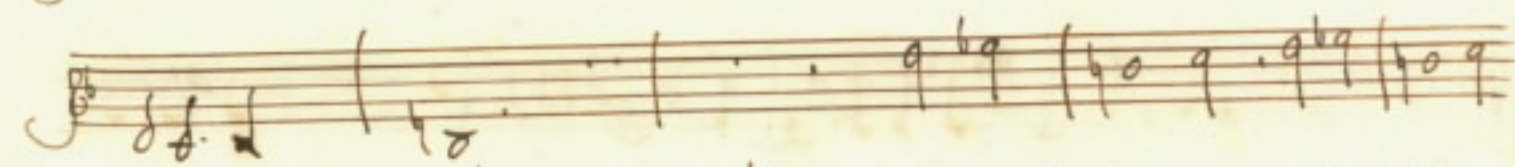
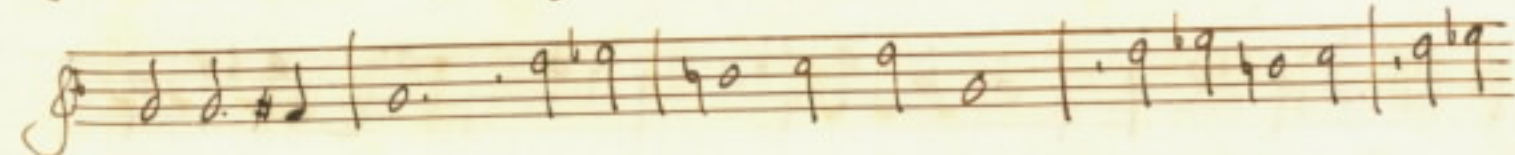




~~ff~~  
ff

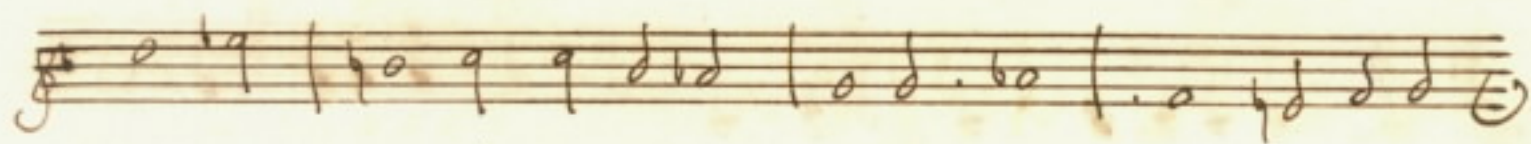
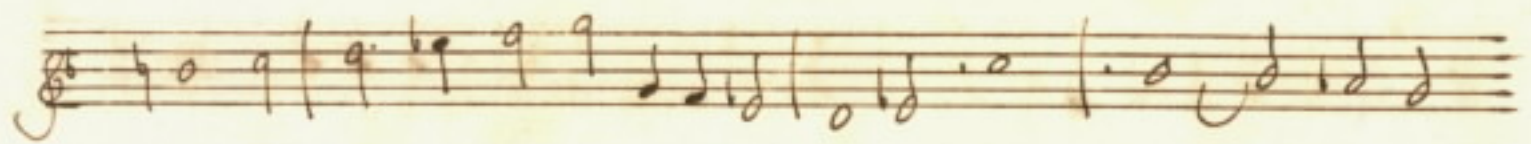


rore della luce in gion = r = dete

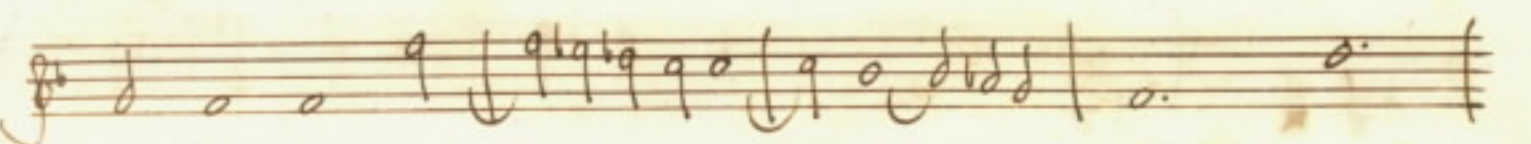
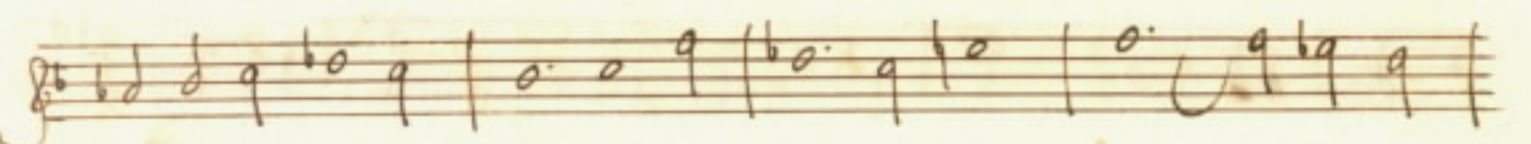


se pur sete del vo = rore Fide amiche Fide a =

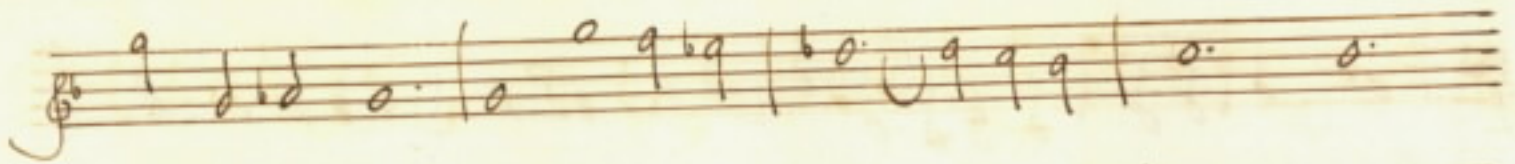




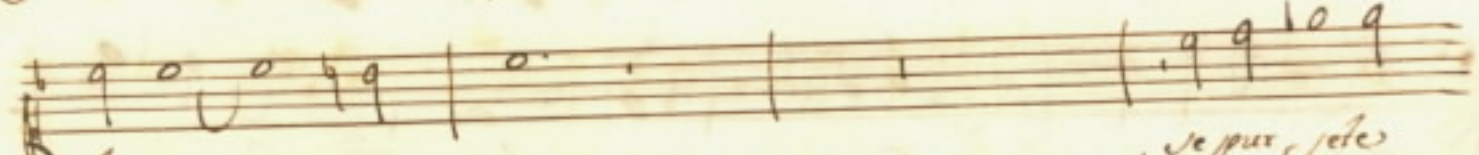
Handwritten musical notation on a five-line staff. Below the staff, there are handwritten lyrics: *miche*, *hor chid de = = jig*, *deh pian = = ge =*. The notation includes notes, rests, and dynamic markings.



Handwritten musical notation on a five-line staff. Below the staff, there are handwritten lyrics: *te*, *al pian = = =*. The notation includes notes, rests, and dynamic markings.

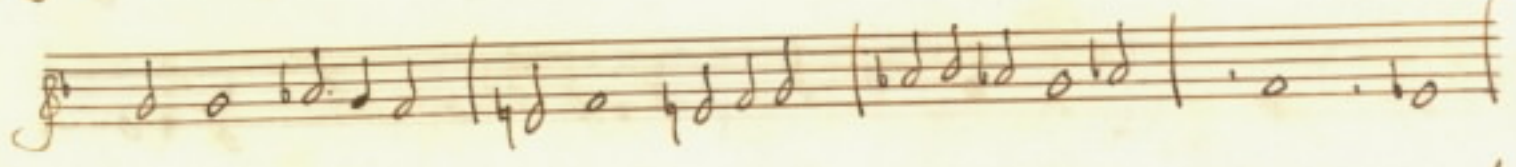
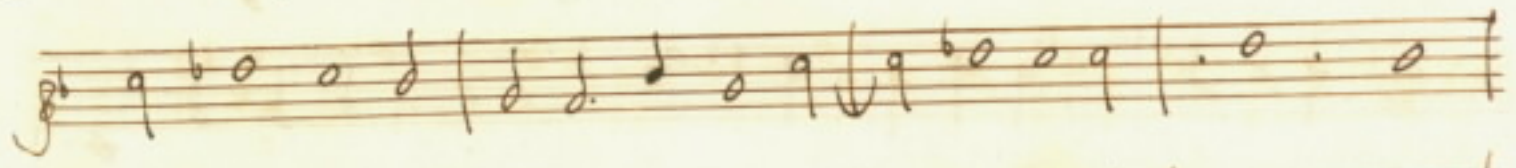


276  
fol

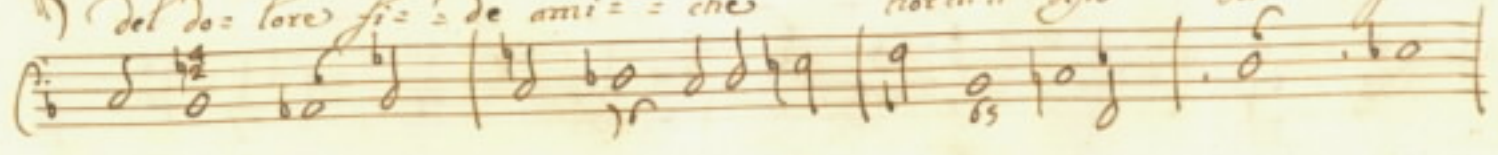


40 *mi = =*

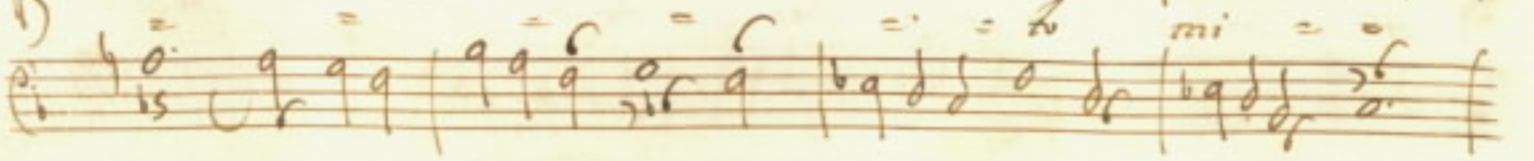
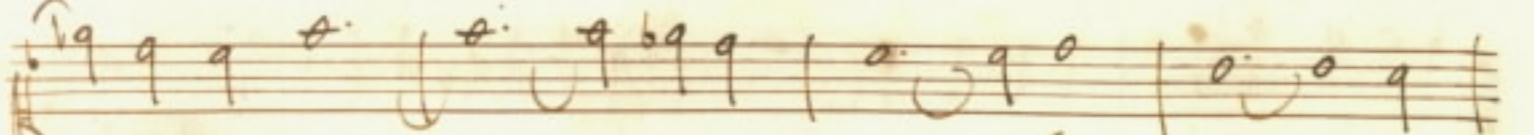
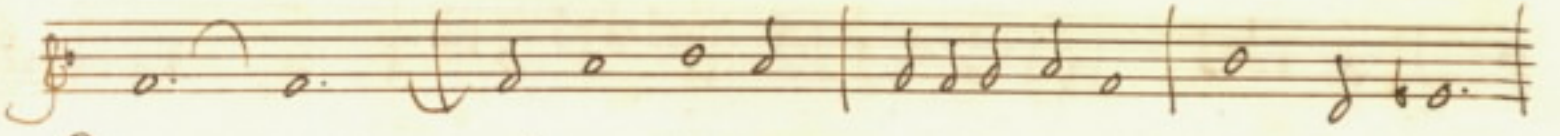
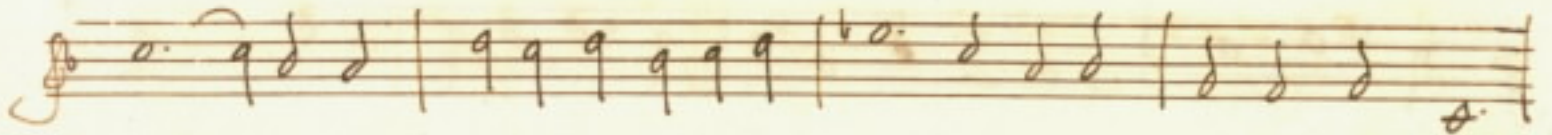
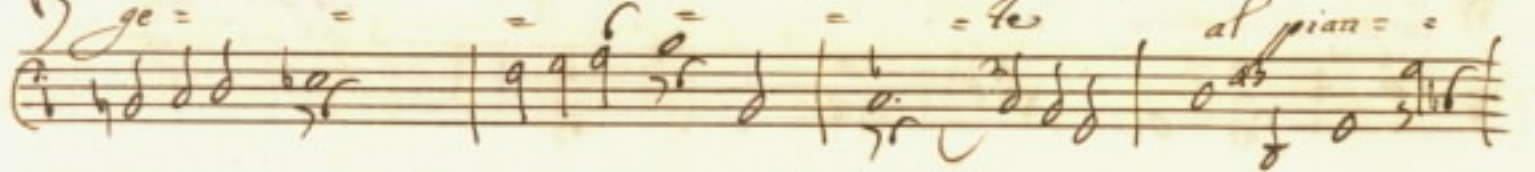
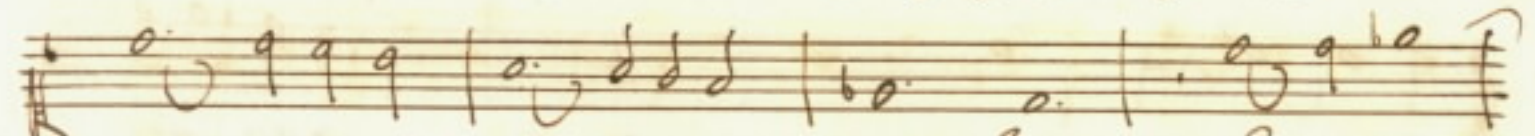
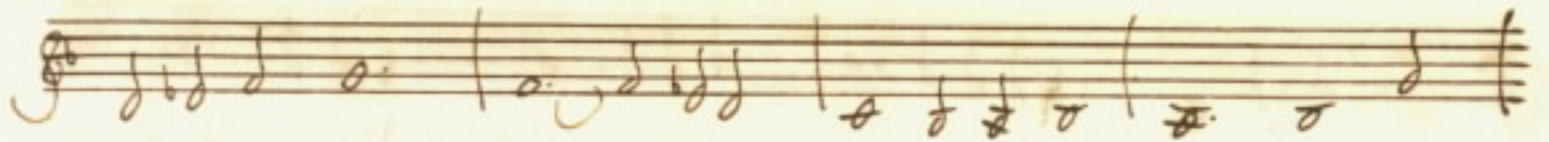
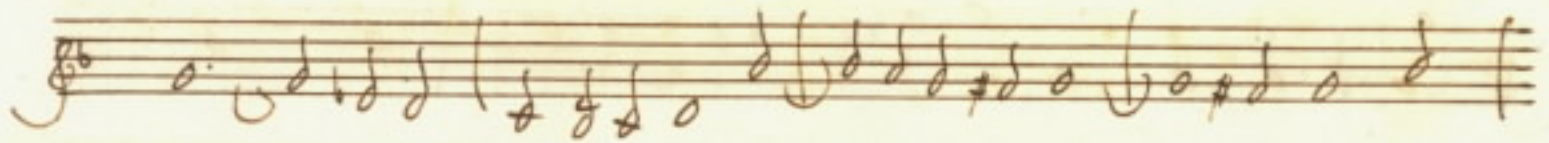
*Je pur Je te*



*del Do = lore fi = = de ami = = che hor ch'il De io del pian*







Handwritten musical notation on a single staff, featuring a treble clef and a key signature of one flat. The notation includes quarter notes, eighth notes, and a triplet of quarter notes. A handwritten number "20" is written in the right margin.

Handwritten musical notation on a single staff, featuring a treble clef and a key signature of one flat. The notation includes quarter notes, eighth notes, and a half note.

Handwritten musical notation on a single staff, featuring a bass clef and a key signature of one flat. The notation includes quarter notes, eighth notes, and a half note. Dynamic markings "pian =  $\text{p}$ " and "mi =  $\text{m}$ " are present above the staff.

Handwritten musical notation on a single staff, featuring a treble clef and a key signature of one flat. The notation includes quarter notes, eighth notes, and a half note.

Handwritten musical notation on a single staff, featuring a treble clef and a key signature of one flat. The notation includes quarter notes, eighth notes, and a half note.

Handwritten signature: W. P. P. P.

Handwritten musical notation on a single staff, featuring a treble clef and a key signature of one flat. The notation includes quarter notes, eighth notes, and a half note.

Handwritten musical notation on a single staff, featuring a bass clef and a key signature of one flat. The notation includes quarter notes, eighth notes, and a half note.

Du-rilla Ani-ma mia gioia delle mie

pene se t'en vai mori-ro Ga-ro ca-ro mio be-

ne deh pianzete per meco a si duo novelle H piola'

ve lo chiedo amiche Ad- = = = b. Siegue

Handwritten musical score for the first system, consisting of three staves. The top staff begins with a treble clef and a 3/8 time signature. The middle staff has a "Rit." marking above it. The bottom staff has a "6." marking above it. The music is written in a cursive, handwritten style.

Handwritten musical score for the second system, consisting of three staves. The bottom staff ends with the instruction "Alta Subito" written in cursive. The music continues in the same handwritten style as the first system.

*Aria* *Se che brine che piove* *Se che*

*brine che piove* *rauni = uate queste rose e bacia = te*

*e bacia = te e bacia = te il lembo ai fior e bacia = te il lembo ai fior*

*Deh ca: dete e pelli = dette trasformate in lacri =*

*molto* *Al pianz gete* *Al piange= te* *al mio dolor* *al mio do: lor* *al*

*al mio do: lor* *del ca: dete e palti: dette* *trasformate in lacri:*

*molto* *Al piangete* *al mio do:*

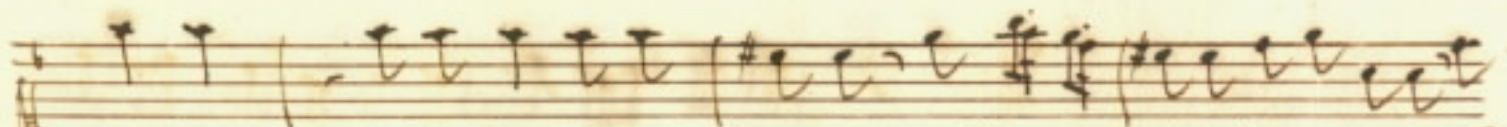
*lor* *Al piangete* *al mio dolor* *scuche grine che pietoze*

Spreche brine che pietose rauui = uate queste

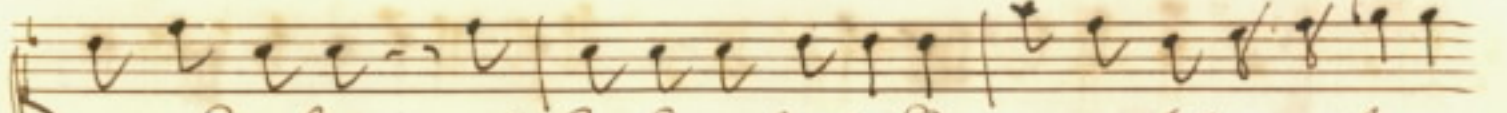
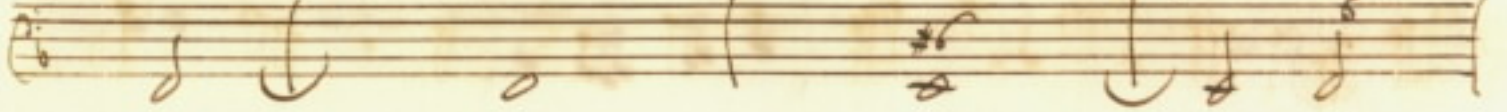
roze, e baciato e baciato e baciato il petto ai fior

e baciato il seno ai fior Segue

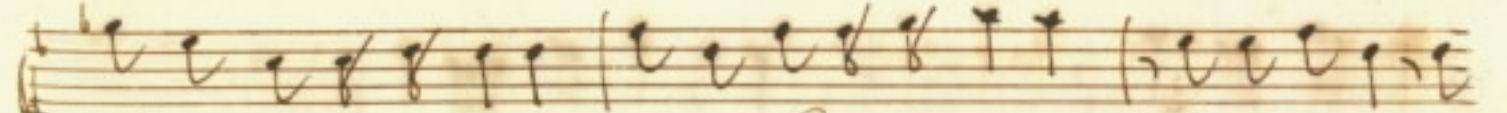
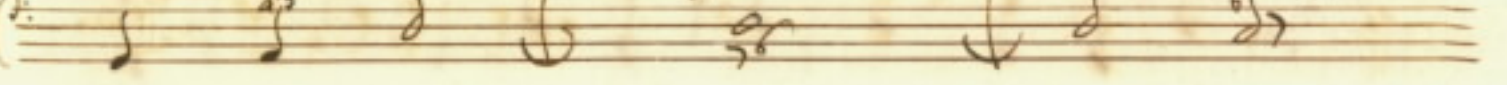
Lianze inuen = gate, e fide, che ai pentuti cantor fermate il



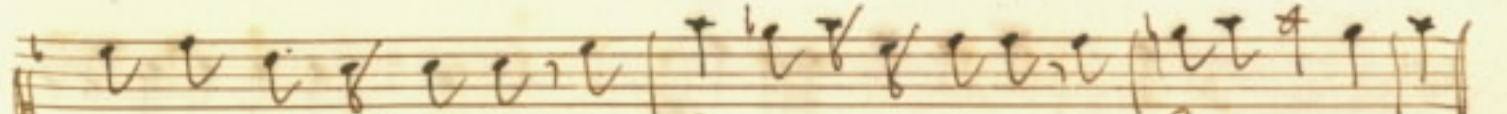
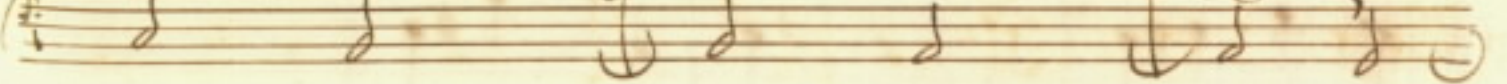
*Ado* al dolor che mi *uccide* *Stilla* = = *te* *al* *di* *mirra* *hu* =



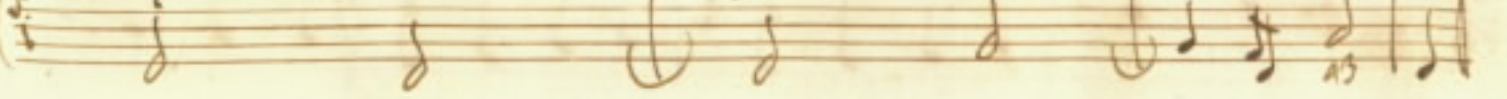
*mor* *nel* *judo* *et* *hor* *che* *parte* *curilla* *meco* *tutte* *piange* *te*



*il* *per* = *duto* *diletto* *quando* *lieta*, *e* *ridente* *al* *raggio* *bel* *dell'*



*ado* = *rato* *Ujo* *so* = *lea* *quini* *recarci* *il* *Paraz* *di* = *jo*

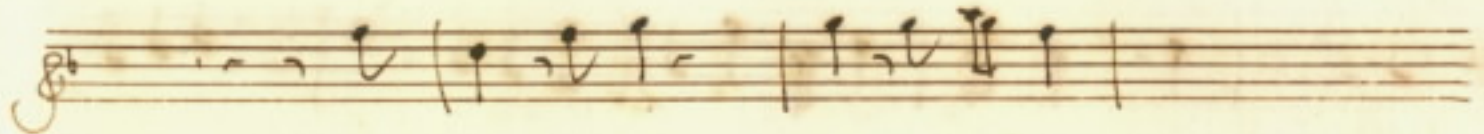
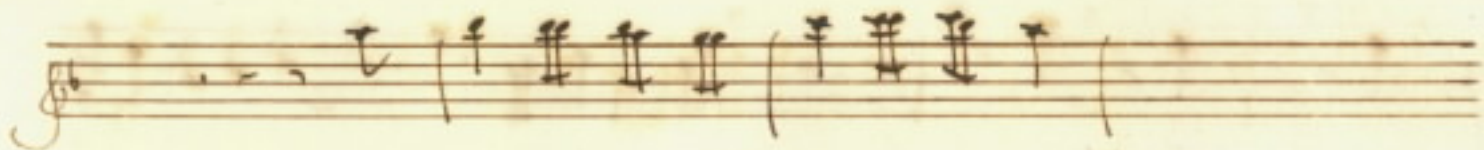




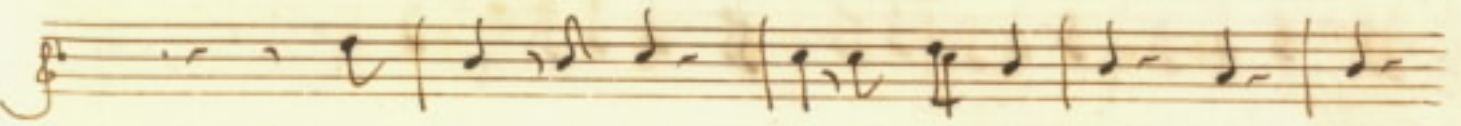
*Alia*

*f = dolo ama = to* *for = mento del co = re*

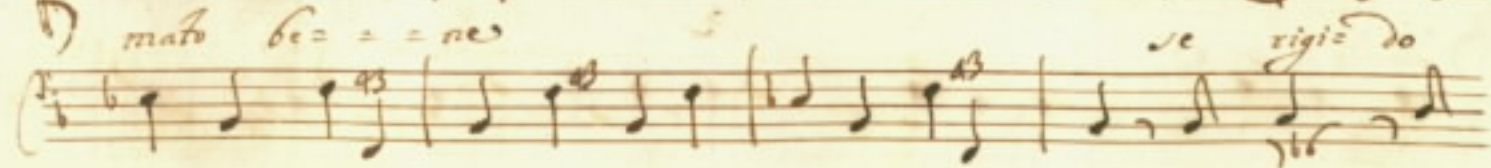
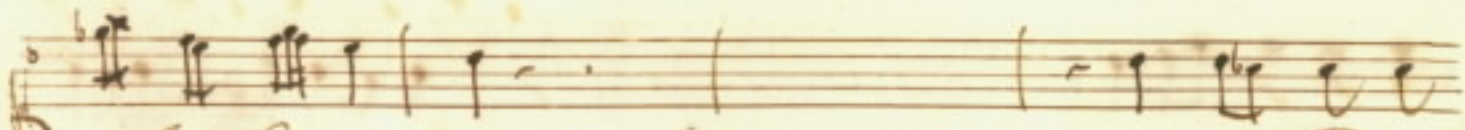
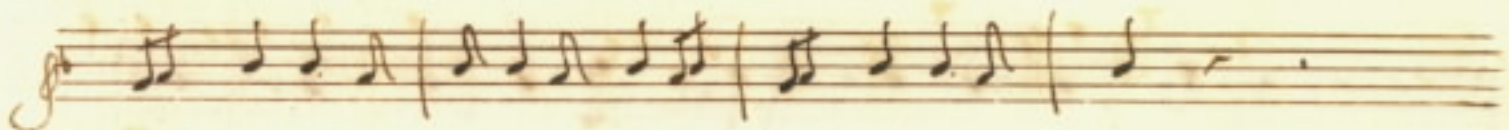
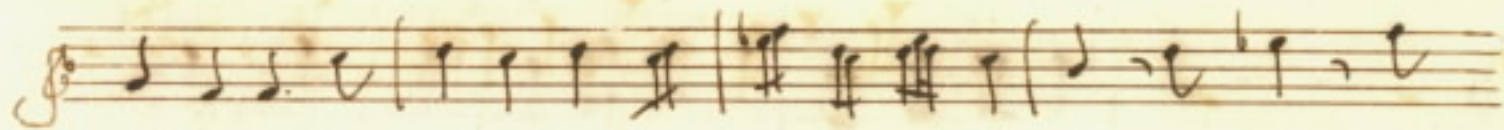
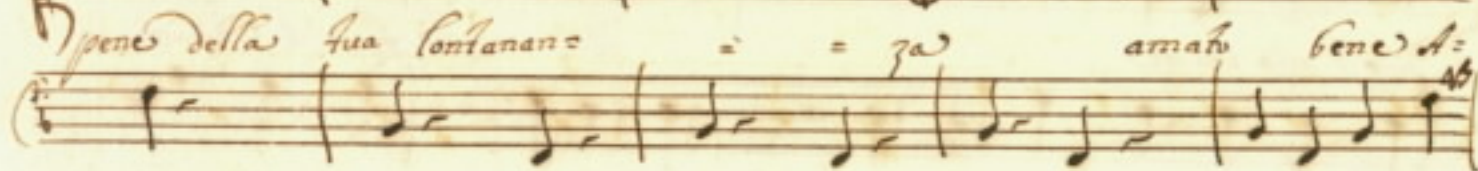
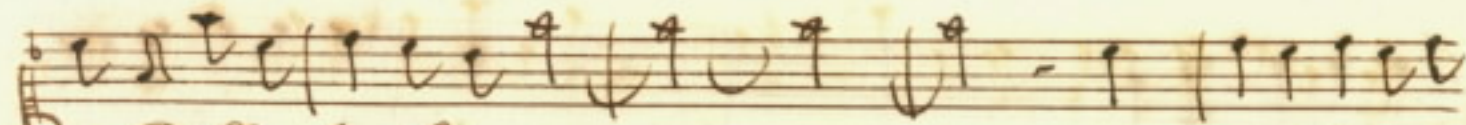
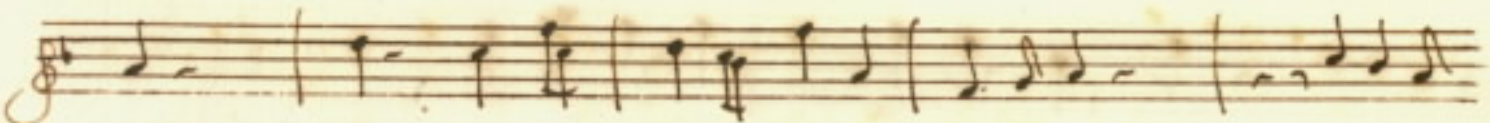
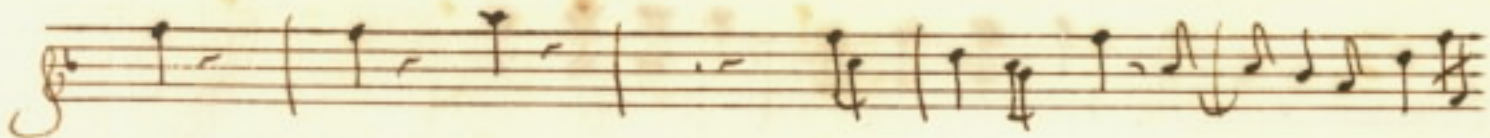
*torment = to del core* *se rigido fatto tra =*



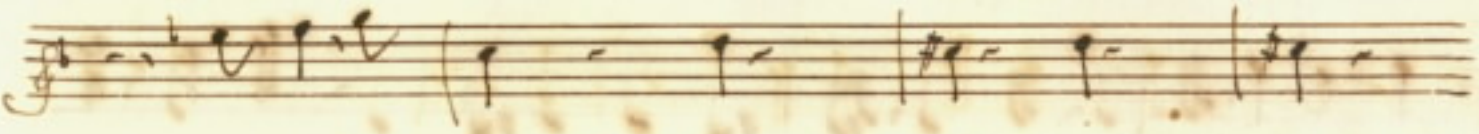
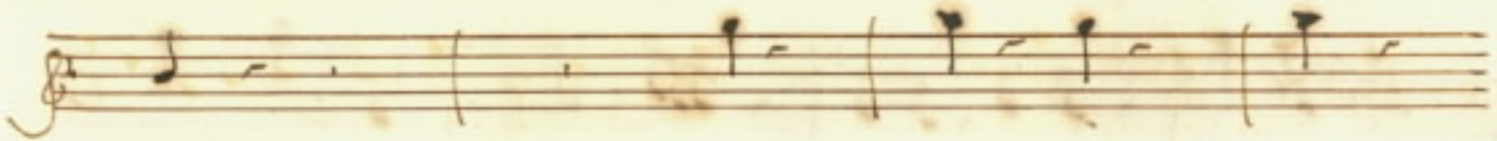
*Primo il mio amore* *sf: primo il dolore a:*



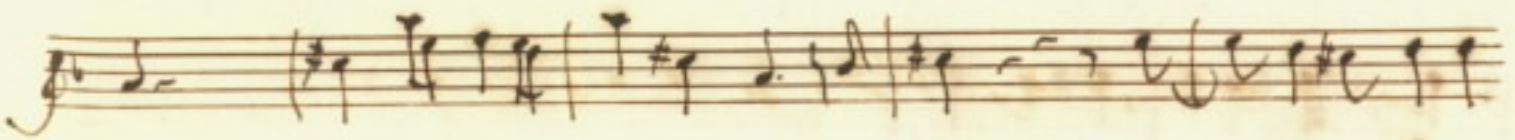
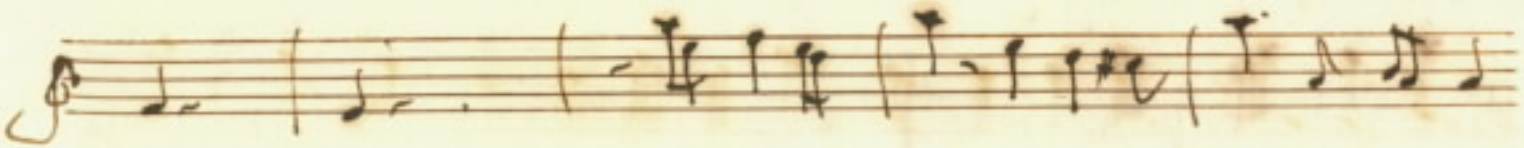
*Secondo le pene* *sf: primo il dolore secondo les.*



94  
95

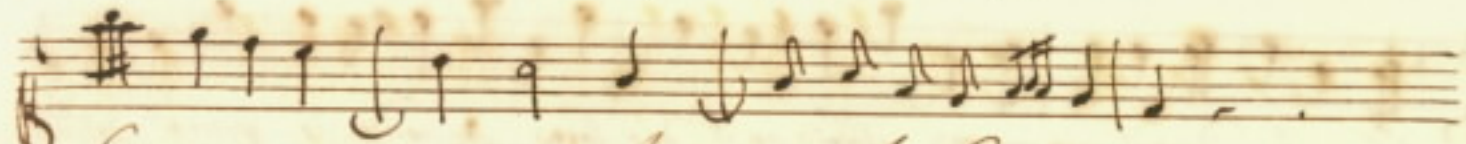
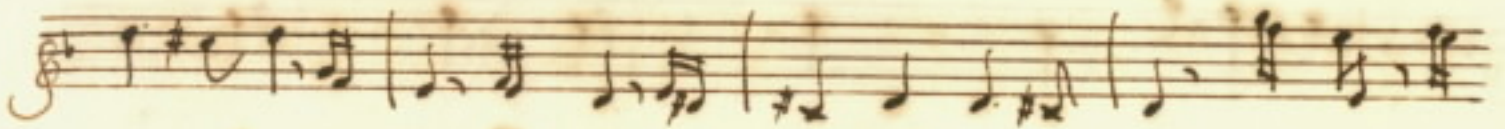
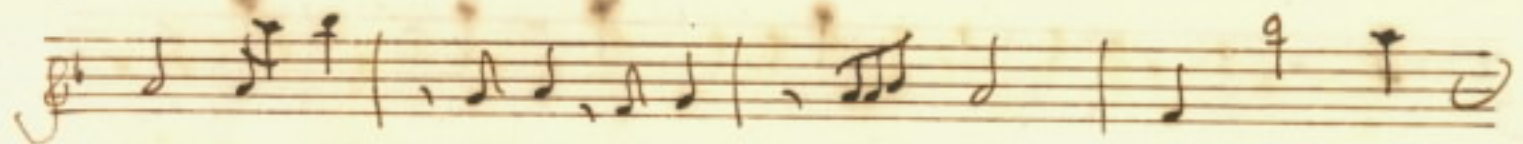


*fato tra: dice il mio amore affri: sco il do: lore a: conda le penes della*

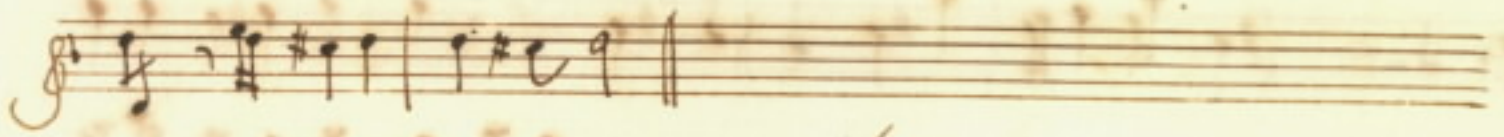
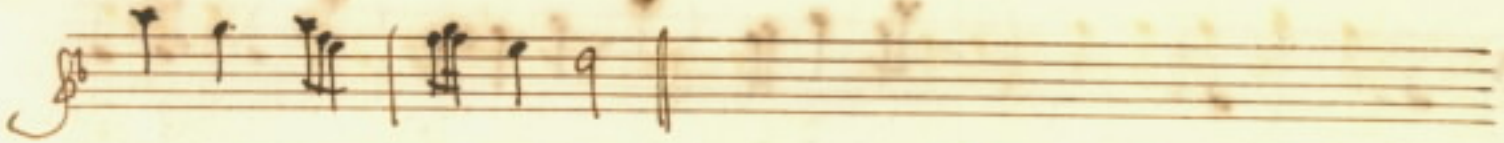
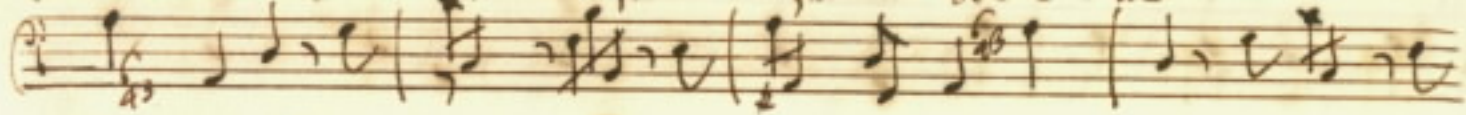


*sua lontanan = = = = ra amato bene amato*

98 4.13 99 4.13



be = = ne a = = ma = = to , amato be = = = ne



*Sigue*



Ma voi occhi = do = senti interni che farrete

quando priujsa = rete delle bellezze sue e sempre ridenti

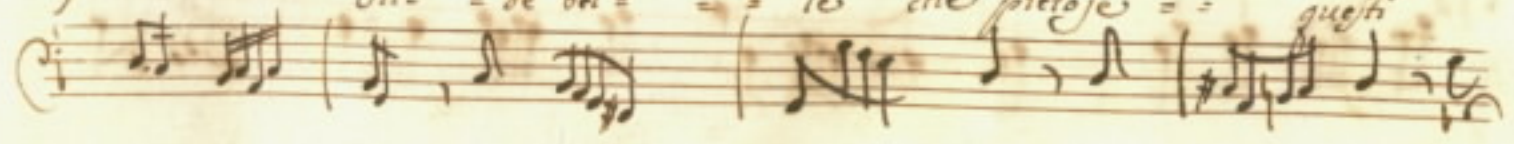
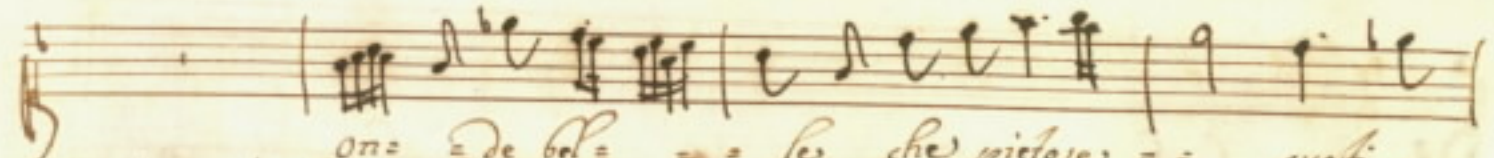
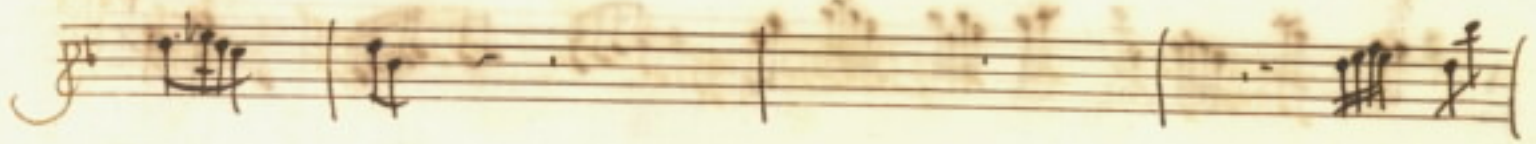
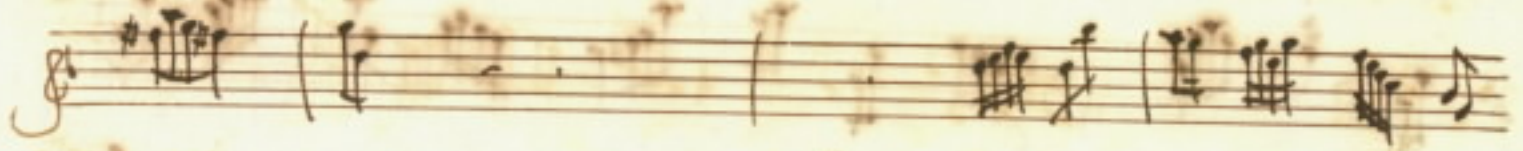
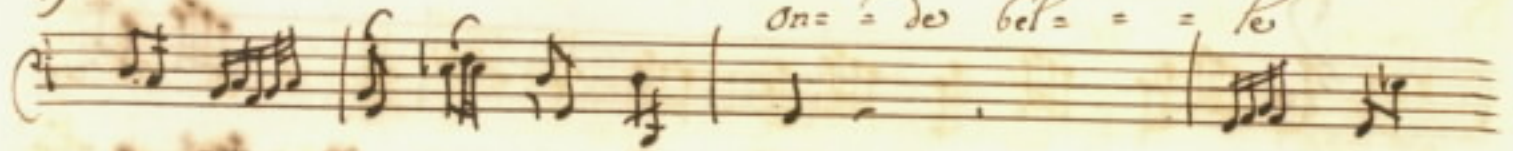
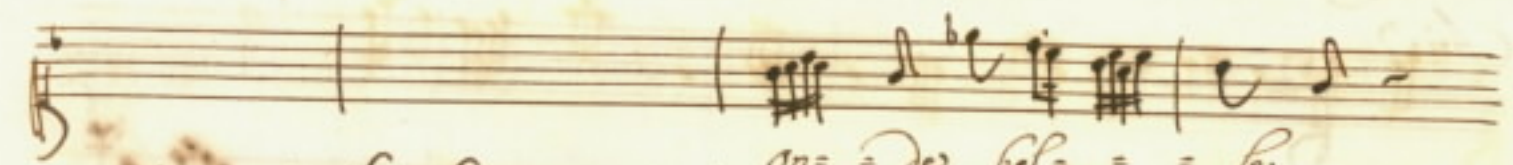
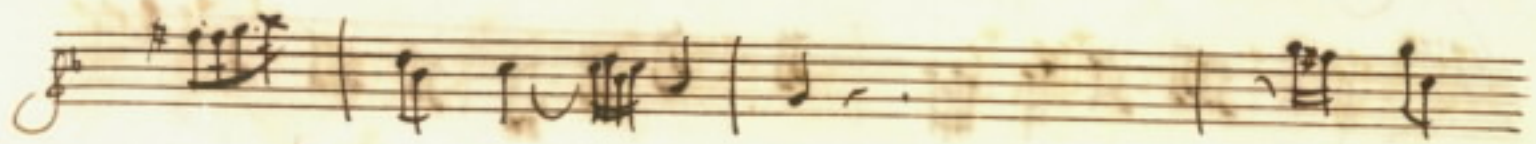
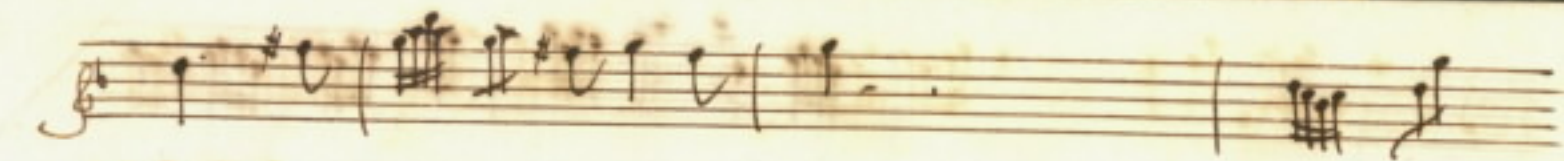
ah dalijo infe = lice intendi il tuo destino sai ciò che

budle a = morei chi arda in fiamme di dullo, e pianza e pianza il



A handwritten musical score on aged paper, featuring several systems of staves. The notation includes treble and bass clefs, a common time signature (C), and various musical symbols such as notes, rests, and ornaments. The score is divided into sections by markings: "Largo" is written in a large, decorative script on the second staff, and "Aria" is written in a similar script on the third staff. The music consists of multiple staves, some with single melodic lines and others with more complex, multi-voiced passages. The paper shows signs of age, including yellowing and some foxing.





*On = de bel = = = lo*

*On = de bel = = = lo che pietose = = questi*



Handwritten musical notation on two staves. The top staff uses a treble clef and contains several measures of music with various rhythmic values, including eighth and sixteenth notes. The bottom staff also uses a treble clef and contains similar musical notation.

Handwritten musical notation on a single staff with a bass clef. It begins with a '4c' marking. The notation includes several measures with rhythmic values such as eighth and sixteenth notes.

Handwritten musical notation on a single staff with a bass clef. It features dynamic markings: *e* *Allo = = ro = se* and *e* *Allo = ro =*. The notation includes several measures with rhythmic values.

Handwritten musical notation on two staves, both using treble clefs. The notation is dense with complex rhythmic patterns, including many sixteenth and thirty-second notes.

Handwritten musical notation on a single staff with a bass clef. It includes dynamic markings: *con lugubre*, *mormo = ris*, *con lugubre*, and *mormo =*. The notation includes several measures with rhythmic values.

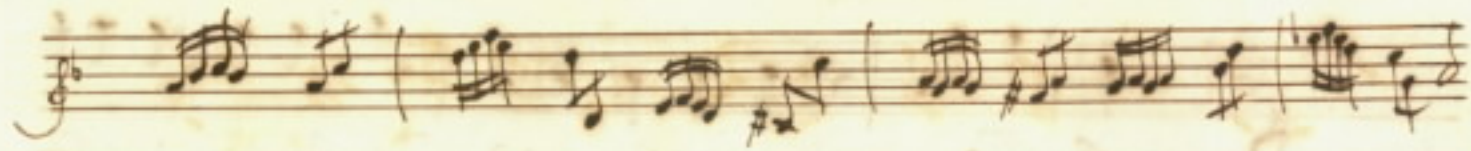
Handwritten musical notation on a single staff with a bass clef. It includes several measures with rhythmic values.

Handwritten musical score on aged paper, featuring ten staves. The score includes vocal lines with lyrics and piano accompaniment. The lyrics are: "rio", "motto = = rio", "del piange = = =", "te = = al", "pian = = to", "mi = =". The music features various note values, rests, and dynamic markings.

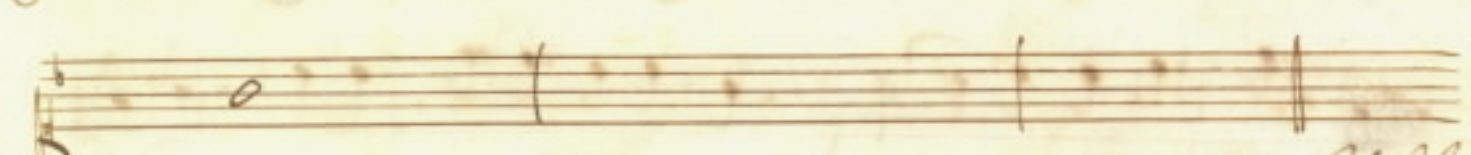
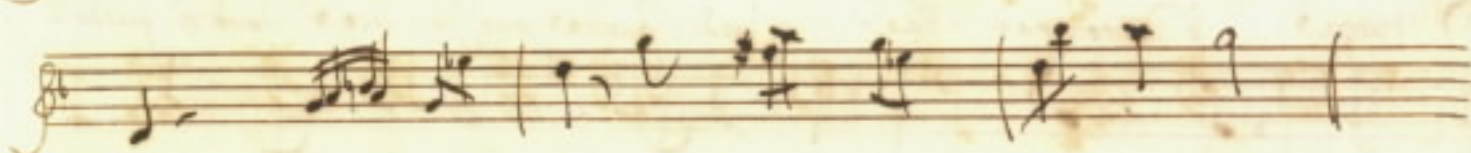
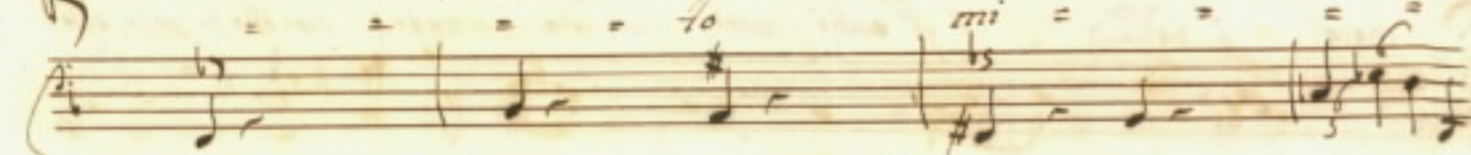
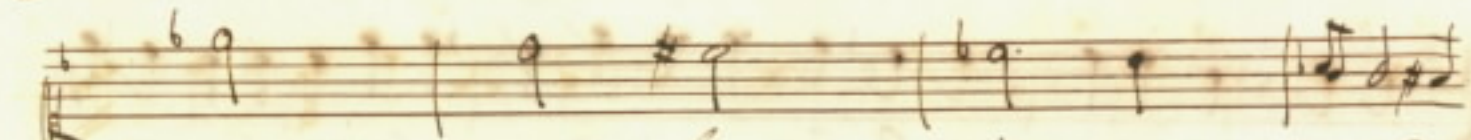
This image shows a page of handwritten musical notation on aged, yellowed paper. The score is arranged in ten staves, organized into five systems of two staves each. The notation includes various musical symbols such as notes, rests, beams, and clefs. The paper shows signs of age, including foxing and water stains. The handwriting is in dark ink, and the overall style is characteristic of 18th or 19th-century manuscript notation. The music appears to be a single melodic line, possibly for a violin or flute, with some dynamic markings and articulation symbols.

*deh piange = = = =*

*al pian = = = =*



99  
100



*M. Adria*

Luzilla anima mia deh vieni a pianger

meo o bella a gl'occhi miei luce adozzata horche la mia spe=

ranga e disperata ma vanto pur felice doue ti guida il'

fato luzilla mia e se fortunata non del'

For ma da gl'occhi allontana il mio bene benchè ne senta pena

godo del tuo gioire e brama solo di starli - fir l'amore che di

me rimembranza habbi nel core Vanne, che non mi

bene che sempre fido amante io l'accompagnerò ed piano mio



*Grave*

Luceilla anima mia anima mia Luceilla

xilla addio Segue

*Grave*

Valea piu' Dix Valea piu' Dix

