

22



frà le pene ti:

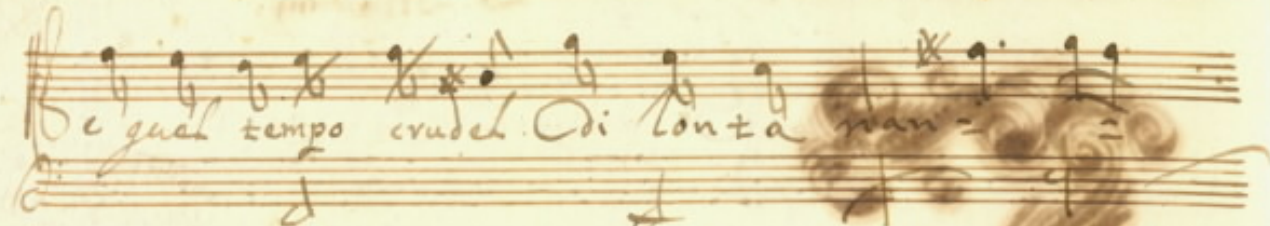
vanna ch'ad un alma influ:

isce in faretrato Arciero

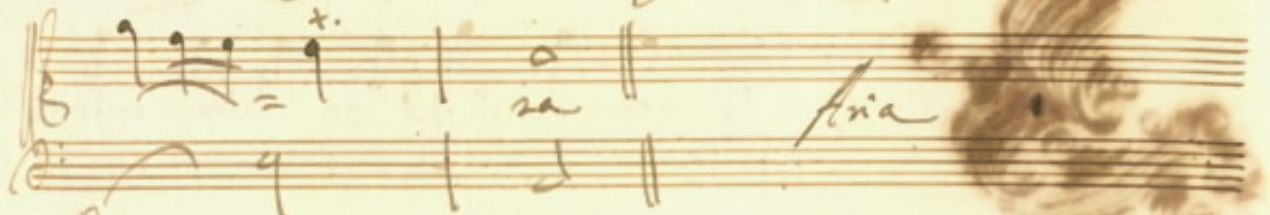
it tormento più fiero

è la proua fatal de la costanza

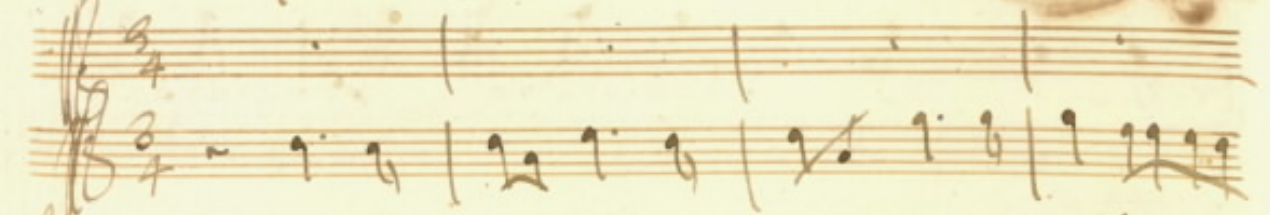
Be quel tempo crudel. Odi lonta man =



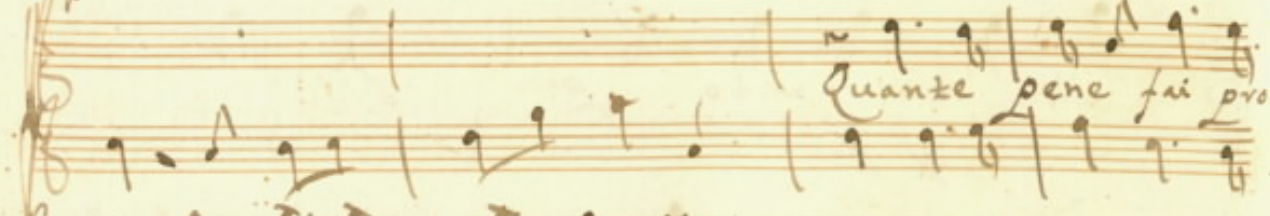
ria *Aria*



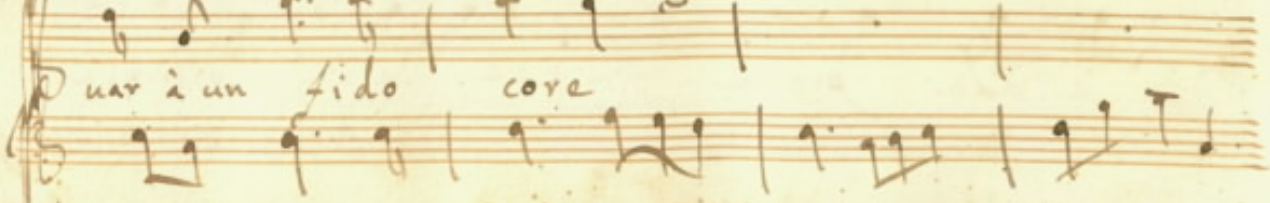
3/4



Quante pene fai pro:



uar à un fido core



Quante pene fai provar à un fido

cove tormen to/a Lontananza tormen =

to/a Lonta nan ~~za~~ za Quante

pene fai provar à un fido cove tormen =

to/a Lonta nanza tormen to/a Lon =

ta nan za Quanta bene si pro-

ur à un fido core tormen tosa Lonza-

za tormen tosa Lon za nan za

Chi sta

Lungi God duo bene moni-

rebbe di dolore Di dolore se non

fosse se non fosse la Speran

Ma i rebbè di do

love se non fosse se non fosse la

Speran = 2a Rit

v.º

La speranza di un giorno torni

L' idolo amato raddolcirce del

leno L'acerbissimo fato

onde gioir non lacrimare io

uoglio ma L'aspettar quel giorno e' un mal cordoglio

Handwritten musical notation on a five-line staff, featuring a treble clef and a 3/4 time signature. The notes are mostly quarter notes and eighth notes, with some rests.

Handwritten musical notation on a five-line staff, featuring a treble clef and a 3/4 time signature. The notes are mostly quarter notes and eighth notes, with some rests.

Handwritten musical notation on a five-line staff, featuring a treble clef and a 3/4 time signature. The notes are mostly quarter notes and eighth notes, with some rests.

Torna o Cavo e mi con so la

Handwritten musical notation on a five-line staff, featuring a treble clef and a 3/4 time signature. The notes are mostly quarter notes and eighth notes, with some rests.

Torna o

Handwritten musical notation on a five-line staff, featuring a treble clef and a 3/4 time signature. The notes are mostly quarter notes and eighth notes, with some rests.

Cavo e mi con so la troppo

Handwritten musical score on aged paper, featuring six systems of staves. Each system consists of a vocal line (treble clef) and a piano accompaniment line (bass clef). The lyrics are written in Italian. The music includes various note values, rests, and ornaments such as triplets and slurs. The lyrics are:
Sola sta quest' Alma senza
te torna o caro e mi con-
so: la troppo sola Caro
Caro sola sola sta quest' alma
senza te Caro Caro

torna | *torna* | *troppa* | *sola*
sola | *sola* | *Ai* *quest'* | *al* *ma*
senza | *te* | *tropo* | *sola*
sola | *sola* | *Ai* *quest'* | *al* *ma*
senza | *te*

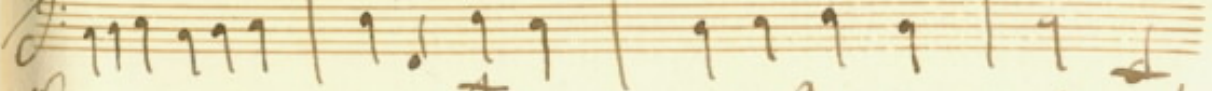
This is a handwritten musical score on aged paper. It consists of six systems, each with a vocal line (treble clef) and a basso continuo line (bass clef). The lyrics are written in Italian. The first system has lyrics: *torna* | *torna* | *troppa* | *sola*. The second system: *sola* | *sola* | *Ai quest'* | *al ma*. The third system: *senza* | *te* | *tropo* | *sola*. The fourth system: *sola* | *sola* | *Ai quest'* | *al ma*. The fifth system: *senza* | *te*. The sixth system is partially obscured but appears to continue the lyrics. The notation includes various note values, rests, and dynamic markings like *troppa* and *tropo*.

Tropo è amaro ogni con:
 ten to non ha calma nel tor:
 mento la mia fe'
 Tropo è amaro ogni con:

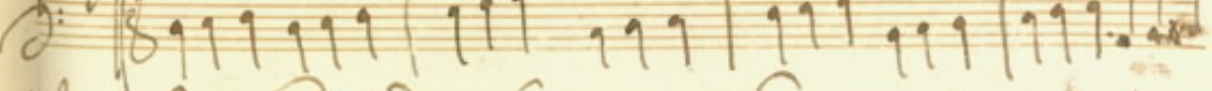
zento non ha alma nel tor:



mento nel tormento la mia



no ha alma nel tor:



men = to la mia se

