



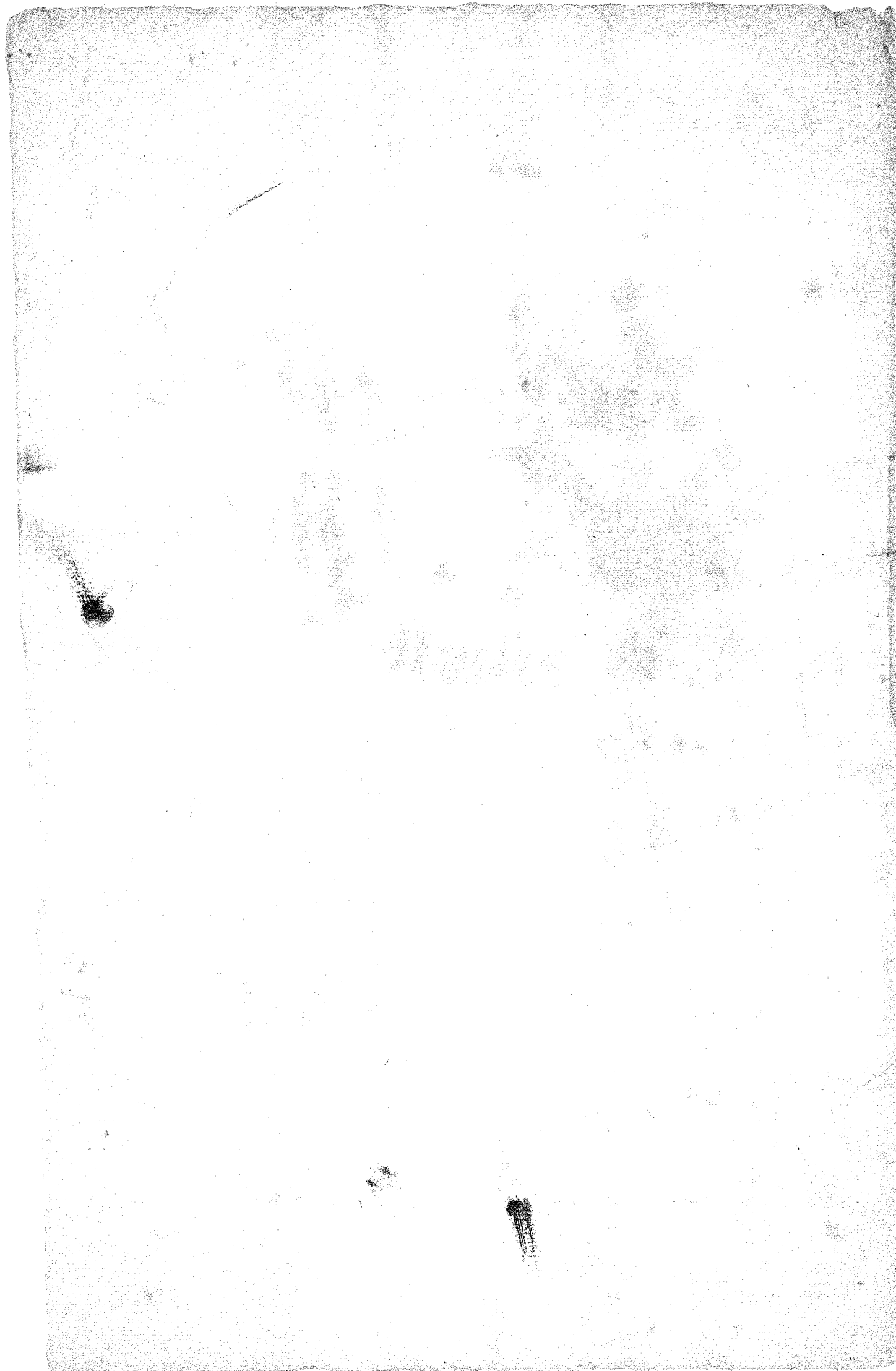
Orkesterv
Rov

[Nilotti, regina d' Egitto]

Sinfonia in G. 4.
a 8. Voci.

Partitur	_____	"	I.	Ette annat Trefämningt
Violino 1 ^a	_____	"	3.	Partitur i G. uti
Violino 2 ^a	_____	"	3.	convulter tre näppföregående.
Viola	_____	"	1.	D. #. Sinfonia.
Basso	_____	"	3.	
Due Corni	_____	"	2.	
Due Oboi	_____	"	2.	

Da Leo, (Leonardo).



65

No 95.

G. 4.

Sinfonia
Violino 1^{mo} & 2^{do}
Basso.

da Leo.

[Mitoseni, Regina d' Egitto]

Sinfonia G# II

No 27.

Original da Leo
Leonardo Leo

Handwritten musical score for the first system, featuring the following parts:

- Cornu 1.** (Cornet 1): Treble clef, G major key signature, 2/4 time signature.
- Cornu 2.** (Cornet 2): Treble clef, G major key signature, 2/4 time signature.
- Oboi 1.** (Oboe 1): Treble clef, G major key signature, 2/4 time signature.
- Oboi 2.** (Oboe 2): Treble clef, G major key signature, 2/4 time signature.
- Violino 1. et 2.** (Violin 1 and 2): Treble clef, G major key signature, 2/4 time signature. Includes the instruction *All.o* (Allegro).
- Viola**: Alto clef, G major key signature, 2/4 time signature.
- Basso** (Bass): Bass clef, G major key signature, 2/4 time signature.

Handwritten musical score for the second system, featuring the following parts:

- oboi e gli Violini**: Treble clef, G major key signature, 2/4 time signature. This part includes a complex melodic line with many slurs and ornaments.
- Viola**: Alto clef, G major key signature, 2/4 time signature.
- Basso** (Bass): Bass clef, G major key signature, 2/4 time signature.



Handwritten musical score for the first system, consisting of six staves. The notation includes various note values (quarter, eighth, and sixteenth notes), rests, and dynamic markings. The word "piano" is written in the third measure, and "forte" is written in the fifth measure. The key signature is one sharp (F#), and the time signature is 4/4. The music concludes with a double bar line and repeat dots.

Handwritten musical score for the second system, consisting of six staves. The notation includes various note values (quarter, eighth, and sixteenth notes), rests, and dynamic markings. The word "piano" is written in the second measure, and "forte" is written in the fourth measure. The key signature is one sharp (F#), and the time signature is 4/4. The music concludes with a double bar line and repeat dots.

Handwritten musical score for the first system, consisting of five staves. The notation includes various note values, rests, and dynamic markings. The first staff begins with a treble clef and a key signature of one sharp (F#). The second staff contains a series of notes with stems pointing downwards. The third staff features a series of notes with stems pointing upwards, followed by a section with a dense, rapid sequence of notes. The fourth staff contains notes with stems pointing upwards, and the fifth staff contains notes with stems pointing downwards. The system concludes with a double bar line.

Handwritten musical score for the second system, consisting of five staves. The notation includes various note values, rests, and dynamic markings. The first staff begins with a treble clef and a key signature of one sharp (F#). The second staff contains notes with stems pointing downwards, followed by a section with a dense, rapid sequence of notes. The third staff contains notes with stems pointing upwards, followed by a section with a dense, rapid sequence of notes. The fourth staff contains notes with stems pointing upwards, followed by a section with a dense, rapid sequence of notes. The fifth staff contains notes with stems pointing downwards. The system concludes with a double bar line. Dynamic markings include *piano* and *forte*.

Handwritten musical score for the first system, consisting of five staves. The top staff is for a woodwind instrument (likely Oboe) in D major, starting with a treble clef and a common time signature. The second staff is for a string instrument (likely Violin) in D major, starting with a treble clef and a common time signature. The third staff is for a string instrument (likely Violin) in D major, starting with a treble clef and a common time signature. The fourth staff is for a string instrument (likely Violin) in D major, starting with a treble clef and a common time signature. The fifth staff is for a vocal line in D major, starting with a treble clef and a common time signature. The music is written in a clear, legible hand.

Handwritten musical score for the second system, consisting of five staves. The top staff is for a woodwind instrument (likely Oboe) in D major, starting with a treble clef and a common time signature. The second staff is for a string instrument (likely Violin) in D major, starting with a treble clef and a common time signature. The third staff is for a string instrument (likely Violin) in D major, starting with a treble clef and a common time signature. The fourth staff is for a string instrument (likely Violin) in D major, starting with a treble clef and a common time signature. The fifth staff is for a vocal line in D major, starting with a treble clef and a common time signature. The music is written in a clear, legible hand. Performance instructions are written in the staves: "Corni e Oboi Tacenti" in the second staff, "a mezza Voce." in the third staff, and "Largo e piano Sempre" in the fifth staff. The system concludes with a double bar line and a key signature change to D minor.

Handwritten musical notation for the first system, consisting of three staves. The top staff features complex, rapid passages with many beamed notes. The middle and bottom staves contain more rhythmic and melodic lines.

Handwritten musical notation for the second system, consisting of three staves. The top staff continues with complex passages. The middle and bottom staves have dynamic markings "forte" and "Forte" written in the lower right area.

Handwritten musical notation for the third system, consisting of five staves. The top two staves have dynamic markings "piano" and "Forte" alternating. The bottom three staves show rhythmic patterns.

Oboi 1.^o col Violini

col Violini

piano forte

Piano

forte

piano

forte

A handwritten musical score consisting of eight staves. The notation includes various note values, rests, and dynamic markings. The first staff has a treble clef and a key signature of one sharp (F#). The second staff has a treble clef and a key signature of one sharp (F#). The third staff has a treble clef and a key signature of one sharp (F#). The fourth staff has a treble clef and a key signature of one sharp (F#). The fifth staff has a treble clef and a key signature of one sharp (F#), with dynamic markings "Piano" and "forte" written below it. The sixth staff has a treble clef and a key signature of one sharp (F#). The seventh staff has a treble clef and a key signature of one sharp (F#). The eighth staff has a treble clef and a key signature of one sharp (F#). The score is enclosed in a double bar line on the right side.