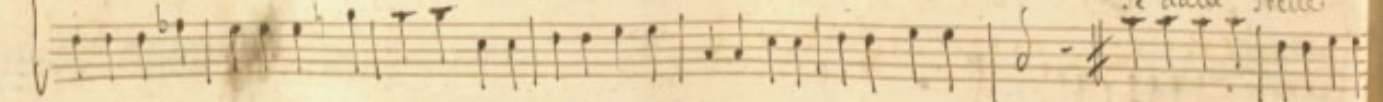
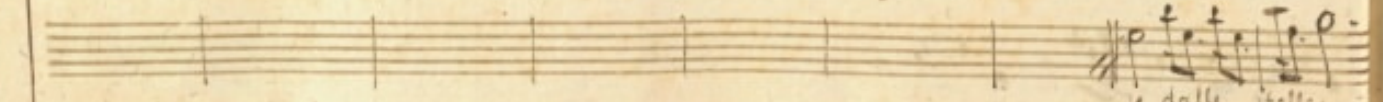
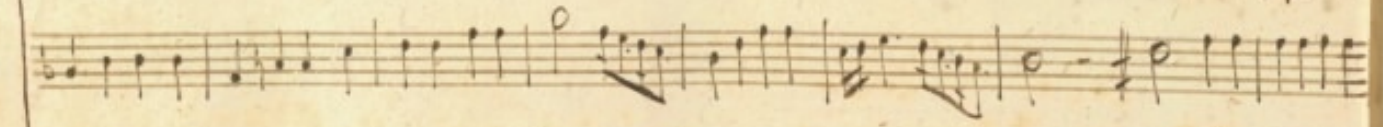
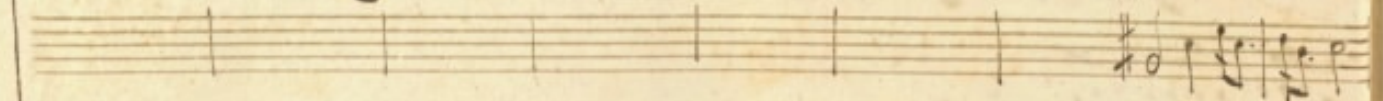
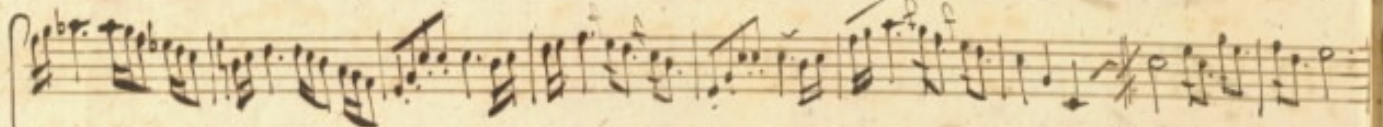
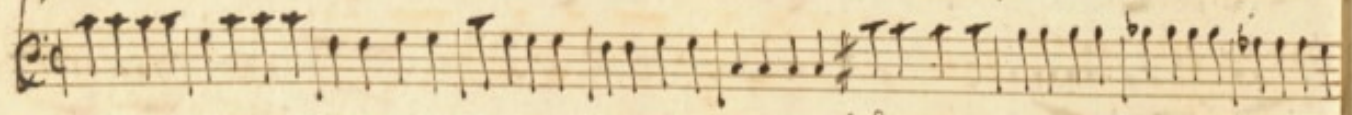
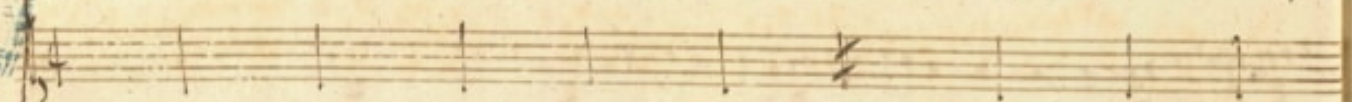
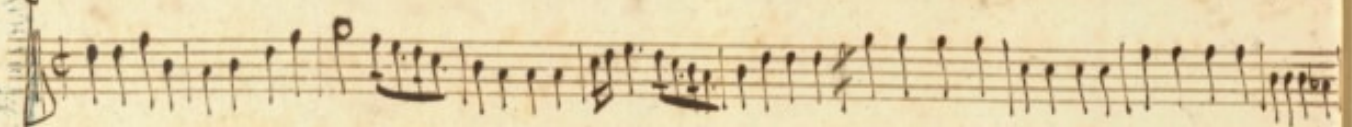
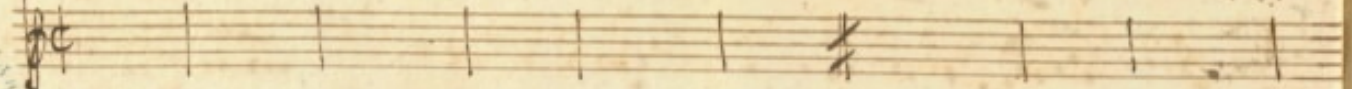
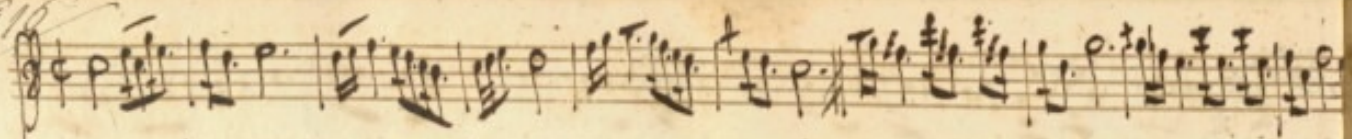


1615



le dalle stelle

tu = non sei guida tu = non sei guida fra le procelle dell'onda ingrada mai perquitt'alma cal = ma non ve cal = ma non

elle fra le procelle dell'onda ingrada mai perquitt'al ma cal = ma non



Handwritten musical score for the first system. It consists of a vocal line and a piano accompaniment. The vocal line includes the lyrics "calma non vi e" and "le dalle stelle".

Handwritten musical score for the second system. It consists of a vocal line and a piano accompaniment. The vocal line includes the lyrics "tu = non sei guida tu = non sei guida fia = le pio celle dell' onda in fida - mai per quest' alma = calma non vi e'." The piano accompaniment includes the instruction "poco forte".

Musical staff with notes and rests, including a fermata.

Musical staff with notes and rests, including a fermata.

Musical staff with notes and rests, including a fermata.

Musical staff with notes and rests, including a fermata.

tra le procelle dell'onda infida mai serquist al - ma calma non u' e calma non

Musical staff with notes and rests, including a fermata.

Musical staff with notes and rests, including a fermata.

Musical staff with notes and rests, including a fermata.

Musical staff with notes and rests, including a fermata.

viemai quest'alma calma non u' e

Musical staff with notes and rests, including a fermata.



Handwritten musical notation on a five-line staff, featuring various rhythmic values and clefs.

Sum'ami curi ne miei pe righi ne miei serighi nelle venturi tu mi con s'gli'

Dal segno

e sol contento sento per te = ven = to per te e sol conten to sempre per te

Dal segno