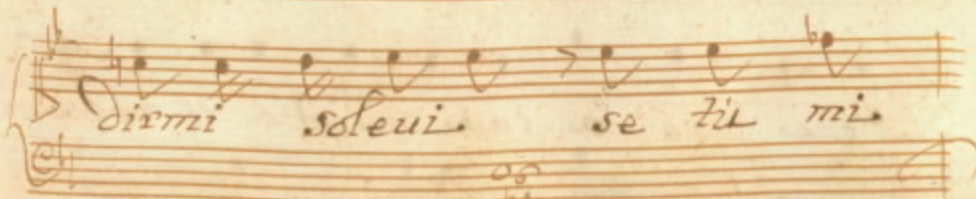
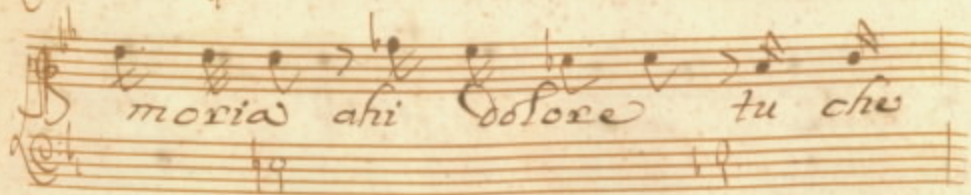
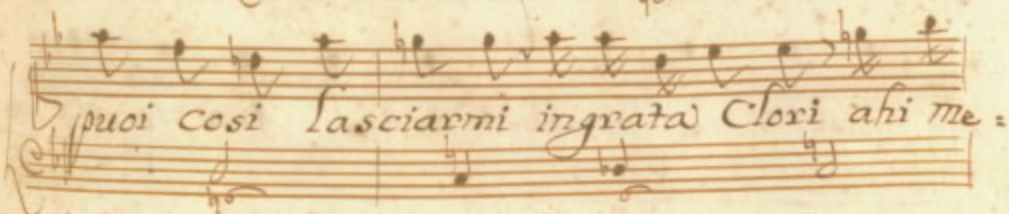
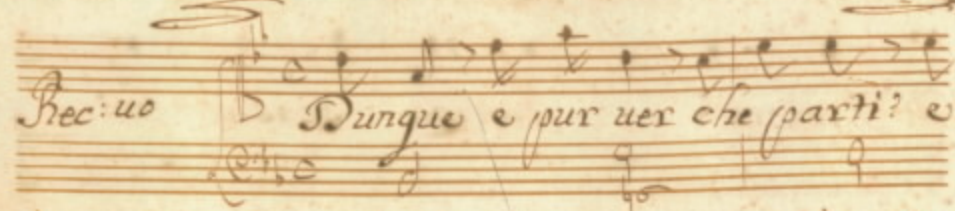


Cantata a Voce Solo di Soprano
Del Signor D. Emanuele Astorica

79

Rec:uo



Lasci io moro Come or senza ri =

storo senza scusa mi

Lasci e m'abbarzoni fra te piu a =

cerbo pene ne pietà ti trat =

tiene ne la tua crudeltà ti reca or =

rore e parti e puoi la =

sciarmi e puoi lasciarmi ingrato

Coro. Siegue Aria

Aria

Lasciami

si si si mai *pria* *rendimi l'alma*

mia *poi*

ua' lontan da me poi *poi ua' lon =*

tan lontan da me *Lasciami*

si si si ma = pria rendimi l'alma mi =

rendimi l'alma mia l'alma

mia poi uai lontan da me poi uai lon =

tan lontan lontan da me lasciami.

si rendimi l'alma poi uai lon =

tan poi poi ua lon =

tan fontan da me fontan da me.

Se la mia uita sei

Handwritten musical notation for the first system. The vocal line (treble clef) contains the lyrics "uiuere non poss' io". The piano accompaniment (bass clef) features a simple harmonic accompaniment with a few notes and rests.

Handwritten musical notation for the second system. The vocal line continues with "uiuere non poss' io". The piano accompaniment continues with similar rhythmic patterns.

Handwritten musical notation for the third system. The vocal line contains the lyrics "uiso dal cor mio". The piano accompaniment continues with a steady accompaniment.

Handwritten musical notation for the fourth system. The vocal line contains the lyrics "uiso dal cor mio che uiue uiue in". The piano accompaniment continues with a steady accompaniment.

Handwritten musical notation for the fifth system. The vocal line contains the lyrics "te uiuere non poss'". The piano accompaniment concludes with a few notes and rests.

io diuiso dal cor mio dal cor
mio che uiue uiue in
te uiue in te. Da Capo



Rec:uo Infelice à di
parlo? già da me t'allontani.



2/

e la mia fede sproni ag =

giungi al tuo piede

puote nel tuo petto

la solita fiera

che la mia fedeltà che i pianti

miei misero ti perdei

perche troppo t'amai

perche troppo t'amai per =

che son fido del se i co =

si torna adorato bene già

Cedo al mio destin ritorna in pace

estinguero' la face

D'un amor senza speme e dalli

miei poco graditi accenti.

piu' non ascolterai.

1

i miei formen

55

Detailed description: This system contains two staves. The top staff is a vocal line with a treble clef and a key signature of one flat. It begins with a first ending bracket labeled '1'. The notes are G4, A4, Bb4, C5, D5, E5, F5, G5. The bottom staff is a piano accompaniment line with a bass clef and a key signature of one flat. It features a whole note chord of G3, Bb3, D4, and a half note chord of G3, Bb3, D4. The number '55' is written below the piano staff.

ti. Siegue

Detailed description: This system contains two staves. The top staff is a vocal line with a treble clef and a key signature of one flat. It features a half note chord of G3, Bb3, D4, followed by a half note chord of G3, Bb3, D4, and then a whole note chord of G3, Bb3, D4. The bottom staff is a piano accompaniment line with a bass clef and a key signature of one flat. It features a half note chord of G3, Bb3, D4, followed by a half note chord of G3, Bb3, D4, and then a whole note chord of G3, Bb3, D4. The text 'ti. Siegue' is written above the piano staff.

Aria

Detailed description: This system contains two staves. The top staff is a vocal line with a treble clef and a key signature of one flat. It begins with the word 'Aria' written in a decorative script. The notes are G4, A4, Bb4, C5, D5, E5, F5, G5. The bottom staff is a piano accompaniment line with a bass clef and a key signature of one flat. It features a half note chord of G3, Bb3, D4, followed by a half note chord of G3, Bb3, D4, and then a whole note chord of G3, Bb3, D4.

Detailed description: This system contains two staves. The top staff is a vocal line with a treble clef and a key signature of one flat. It features a half note chord of G3, Bb3, D4, followed by a half note chord of G3, Bb3, D4, and then a whole note chord of G3, Bb3, D4. The bottom staff is a piano accompaniment line with a bass clef and a key signature of one flat. It features a half note chord of G3, Bb3, D4, followed by a half note chord of G3, Bb3, D4, and then a whole note chord of G3, Bb3, D4.

Senza chiamarti in

Detailed description: This system contains two staves. The top staff is a vocal line with a treble clef and a key signature of one flat. It features a half note chord of G3, Bb3, D4, followed by a half note chord of G3, Bb3, D4, and then a whole note chord of G3, Bb3, D4. The bottom staff is a piano accompaniment line with a bass clef and a key signature of one flat. It features a half note chord of G3, Bb3, D4, followed by a half note chord of G3, Bb3, D4, and then a whole note chord of G3, Bb3, D4. The text 'Senza chiamarti in' is written above the piano staff.

grata ingrata

pene face-ro e piu non

Cerchero non cerche-ro se

m'odij m'odij o' m'ami'

senza chiamarti ingrata in =

grata le pene tacero' tacero'

e piu non cerchero' non cerchero' se'

m'odij m'odij - o m'ami'

non cerchero' se m'odij non cerche' =.

ro' se m'ami' e piu non cerche' =.

ro non cercherò se m'o = dij se

m'odij o' = m'ani.

ne tu da me saprai

che fido t'amo ancor che fido

t'amo ancor o' se disciosto il

Cor più non ti brami

ne tu saprai se

t'amo ancor ne tu saprai se

non ti brami il cor che fido

= fido t'amo ancor che fido

fido t'amo ancor o se Di =

sciolto il cor piu non = ti bra =

mi piu non ti bra = mi Dal capo
fine